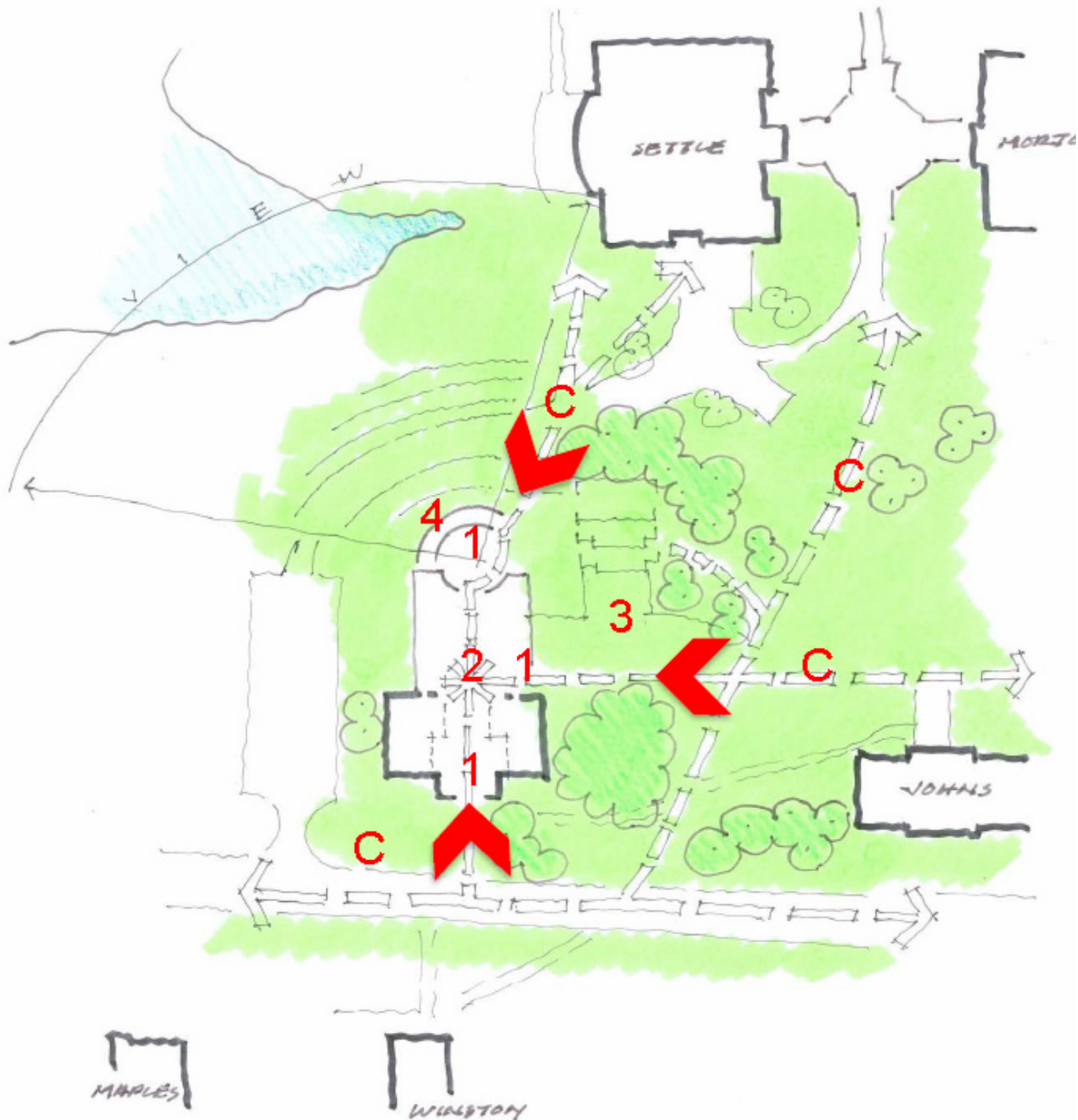




VIEW OF SOUTH EAST FACADE FROM VIA SACRA

**THE STUDENT CENTER**  
**HAMPDEN-SYDNEY COLLEGE**



- 1 SENSE OF ARRIVAL
- 2 LIVING ROOM - INTERIOR
- 3 LIVING ROOM - EXTERIOR
- 4 PORCH/VIEW
- C CONNECTIONS

SITE CONCEPT DIAGRAM

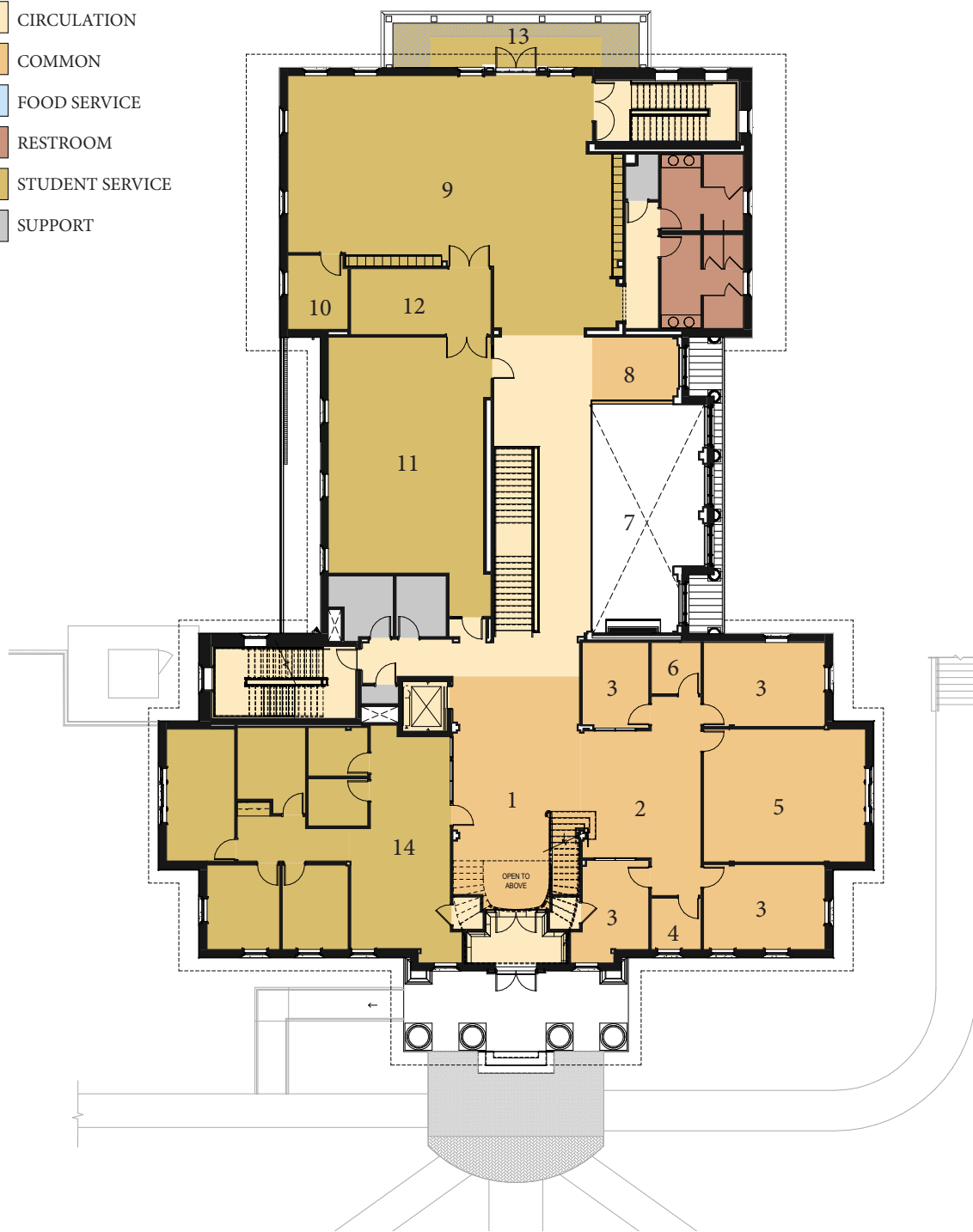
- CIRCULATION
- COMMON
- FOOD SERVICE
- RESTROOM
- STUDENT SERVICE
- SUPPORT



- 1 LIVING ROOM LOUNGE
- 2 CASUAL DINING AREA
- 3 BAR
- 4 OUTDOOR PATIO
- 5 KITCHEN
- 6 GAME ROOM AND LOUNGE
- 7 MAILBOX ALCOVES
- 8 POST OFFICE COUNTER
- 9 OUTDOOR ACTIVITIES STORAGE
- 10 RECEIVING
- 11 MECHANICAL

FIRST FLOOR

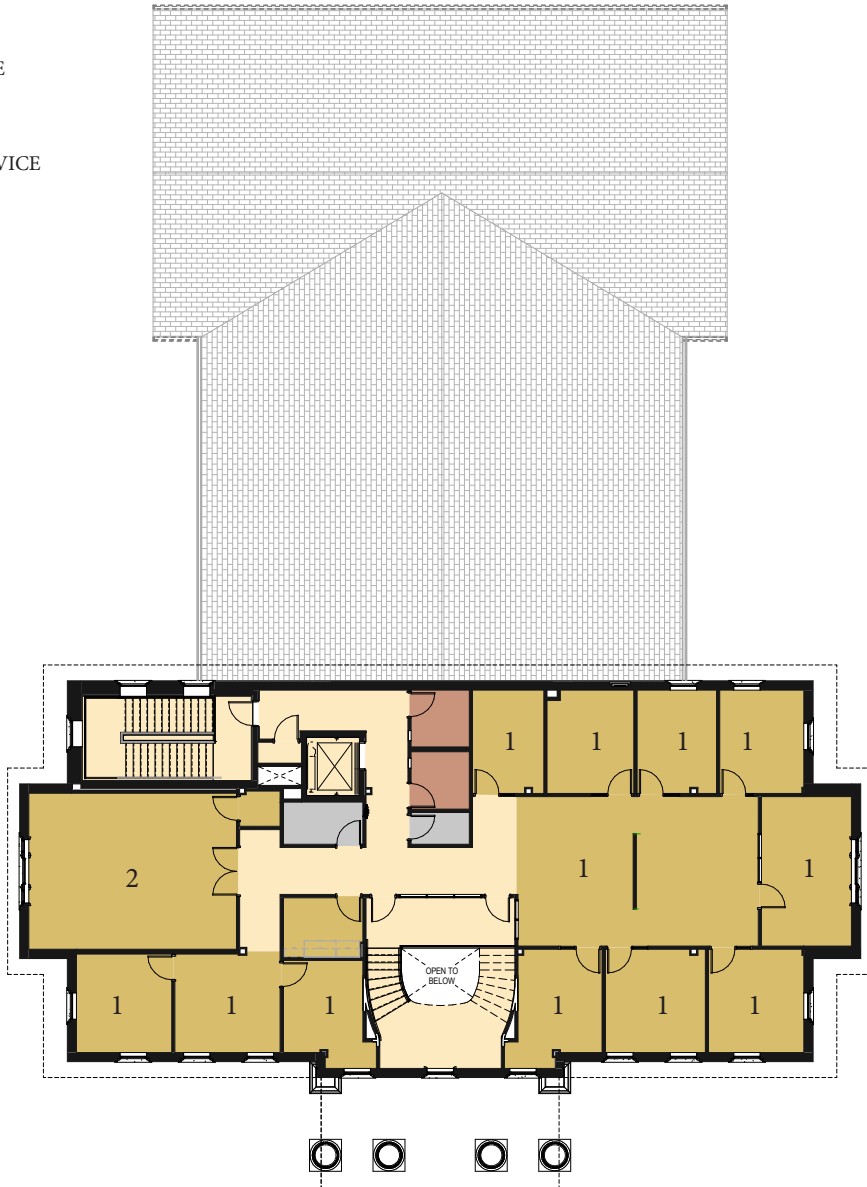
- CIRCULATION
- COMMON
- FOOD SERVICE
- RESTROOM
- STUDENT SERVICE
- SUPPORT



- 1 FOYER
- 2 LOUNGE
- 3 GROUP MEETING ROOM
- 4 STUDY/MEETING ROOM
- 5 CLASSROOM
- 6 COPY ROOM
- 7 OPEN TO BELOW
- 8 OPEN STUDY AREA
- 9 STUDENT ORG. FLEX SPACE
- 10 STUDENT ORG. WORKROOM
- 11 STUDENT ORGANIZATION MULTIPURPOSE ROOM
- 12 MULTIPURPOSE ROOM STORAGE
- 13 OUTDOOR BALCONY
- 14 CAREER DEVELOPMENT SUITE

SECOND FLOOR

- CIRCULATION
- COMMON
- FOOD SERVICE
- RESTROOM
- STUDENT SERVICE
- SUPPORT



- 1 OFFICE OF STUDENT AFFAIRS
- 2 HONOR COURT

THIRD FLOOR



VIEW OF VIA SACRA ENTRANCE LOBBY

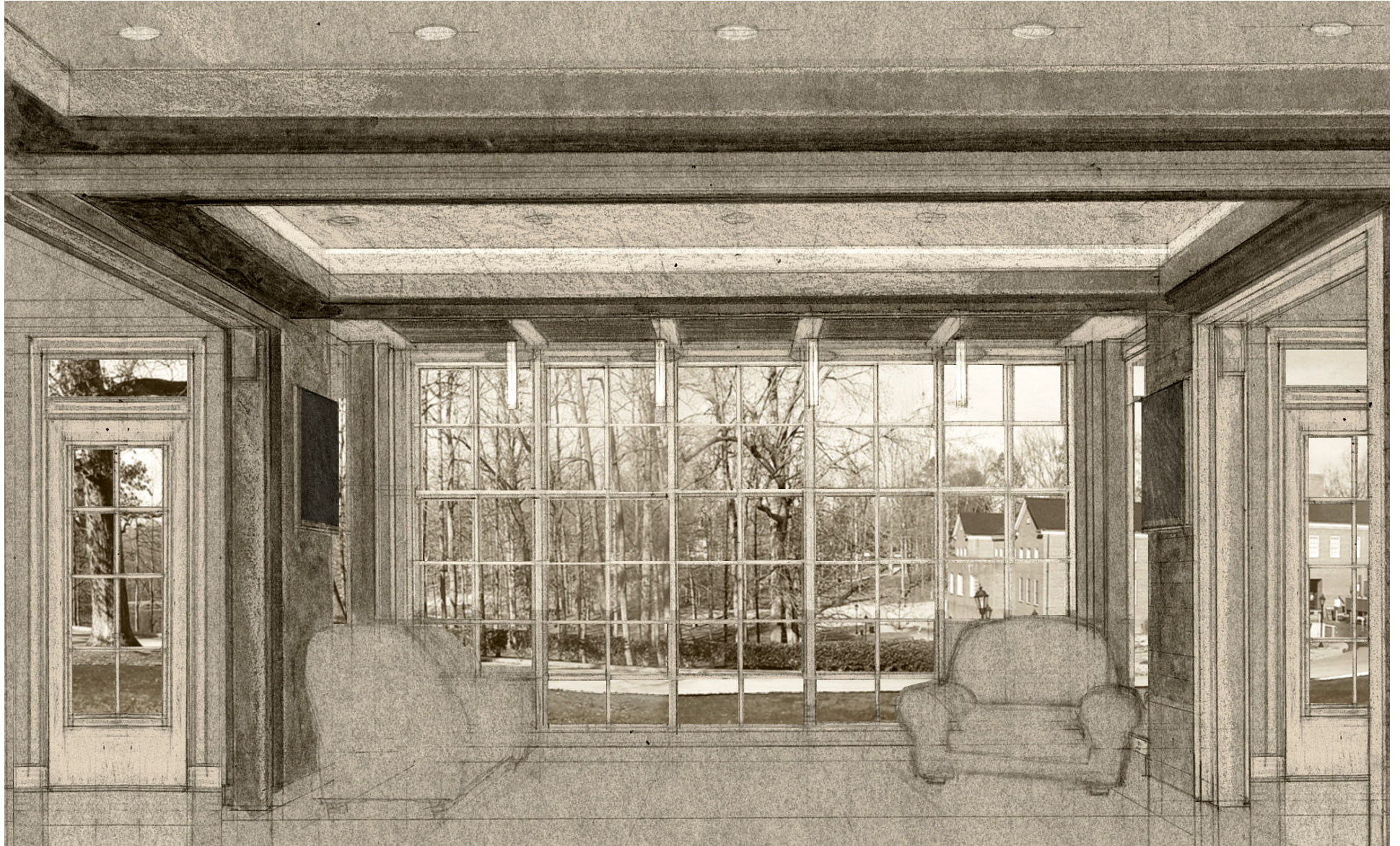


VIEW OF LIVING ROOM



AERIAL VIEW OF NORTH PATIO





VIEW FROM DINING OVERLOOKING CHALGROVE LAKE