



Hampden-Sydney *the first two centuries*

Dr. William Porterfield

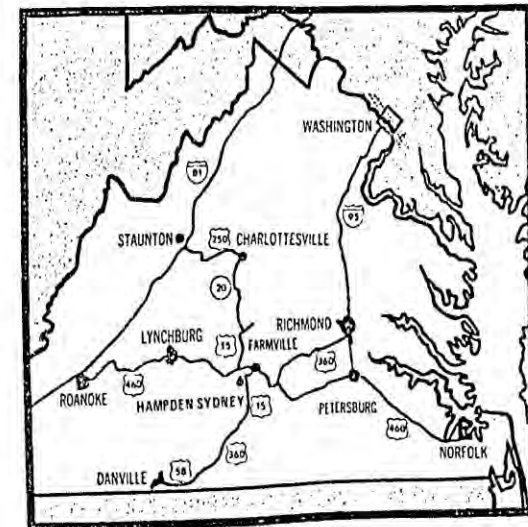
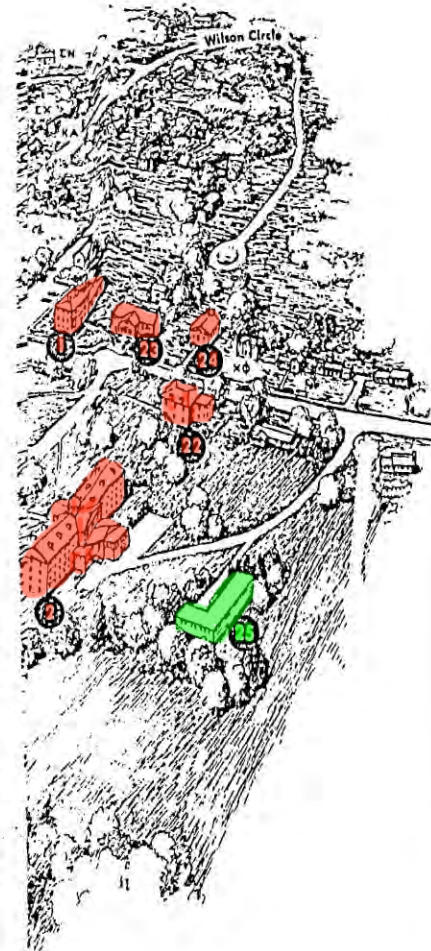
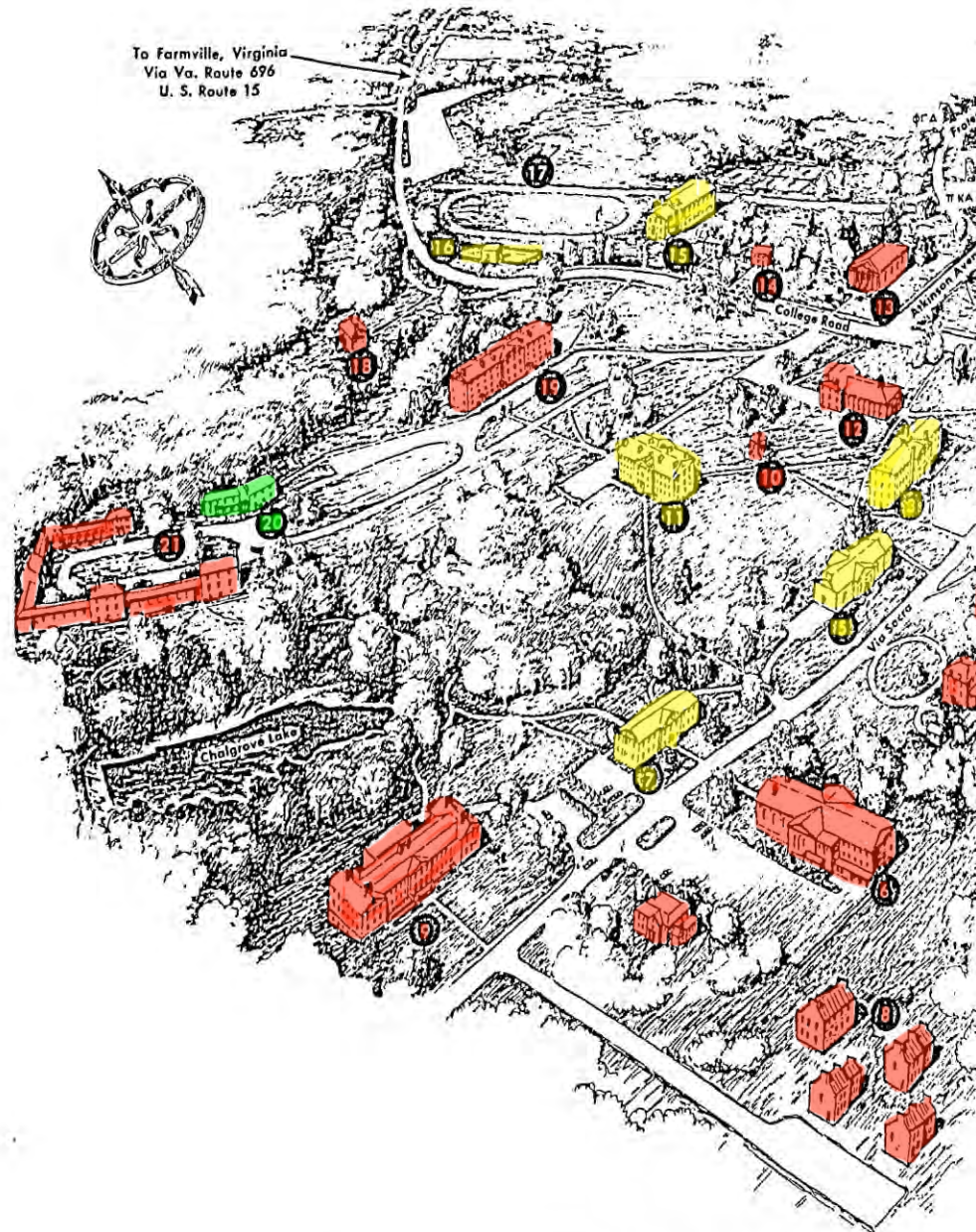
Emeritus Professor



An aerial photograph of a dense, lush green forest. The trees are packed closely together, creating a vibrant green canopy. The lighting is bright, highlighting the texture of the leaves. In the upper left quadrant, there is white text that reads "Hampden-Sydney campus" and "1770".

Hampden-Sydney campus
1770

Hampden-Sydney campus 50 years ago (double-page spread from 1975 catalog)



Washington182 miles	Lynchburg..... 55 miles
Norfolk150 miles	Charlottesville .. 69 miles
Roanoke108 miles	Staunton101 miles
Danville 90 miles	Richmond 70 miles

1 ATKINSON HALL
Administration

4 MIDDLECOURT
President's Home

7 EGGLESTON LIBRARY

11 MORTON HALL
Academic

15 GAMMON GYMNASIUM

19 CUSHING HALL
Upperclass Dormitory

23 INFORMATION CENTER
and OFFICE OF COLLEGE AFFAIRS

2 VENABLE HALL
Freshman Dormitory

5 JOHNS AUDITORIUM
and RECREATION LOUNGE

8 BLAKE INFIRMARY

12 GRAHAM HALL
Freshman Dormitory

16 HUNDLEY STADIUM

21 WHITEHOUSE HALL
Upperclass Dormitory

24 POST OFFICE

9 SCIENCE CENTER

17 DEATH VALLEY

25 MAINTENANCE SHOP

sassenach

noun

sas·se·nach 'sas^ən,ə|k,
plural-s

often capitalized

: a typical Englishman or something considered typical of England
—often **used disparagingly** by Scots and Irish

Merriam-Webster Online Dictionary

Timeline for founding the colony of Virginia

1600 Elizabeth is still queen, but England is nervous about finding a successor.

1603 Elizabeth dies, and successor is going to have to be the nearest cousin

Winner of the succession lottery is James VI of Scotland, about whom many important people in England have strong reservations – (1) he is a Scot, (2) his mother was a Catholic, and (3) he is officially a Presbyterian, which is how you stay on the Scottish throne. All the beautiful people in England are Anglicans, a position curiously in the middle between Catholic and Presbyterian. But James REALLY wants to be king of England (at the time Scotland had a population about the same as Charlotte NC now), so quick before he's overthrown he delivers some warm Anglican fuzzies. To wit:

1604 As soon as he can master the palace e-mail, he announces a Commission to translate the Bible for church and common use, the translation to be done by a 100% Anglican group. Hence the King James Version (longest lasting political payoff).

1605 He announces that he is setting up a Crown Colony in the New World, which can only be set up and populated by genuine Anglican Englishmen, not weird people who might be Catholic or Presbyterian, and certainly not foreigners.

- 1607 The colony lands in Virginia, quite conveniently in the village of Jamestown.
- 1608 Just farming will only keep you alive, so John Rolfe sails for the Caribbean to get some Spanish tobacco seed, because tobacco is known to sell like hotcakes in London.
- ~1670 Wall-to-wall tobacco farming (by good English Anglicans) reaches as far west as the *fall line*, where the soil changes from sandy to clay. The variety of tobacco seed they have won't grow in clay, so new settlement changes from westward to northward. But still exclusively by Anglican Englishmen.
- 1707 By massive bribery, the English convince the Scottish Parliament to merge with England into the United Kingdom, and all of a sudden Scots can emigrate to Virginia. **This is big.**

Note open circles
for cities, small
dots for towns



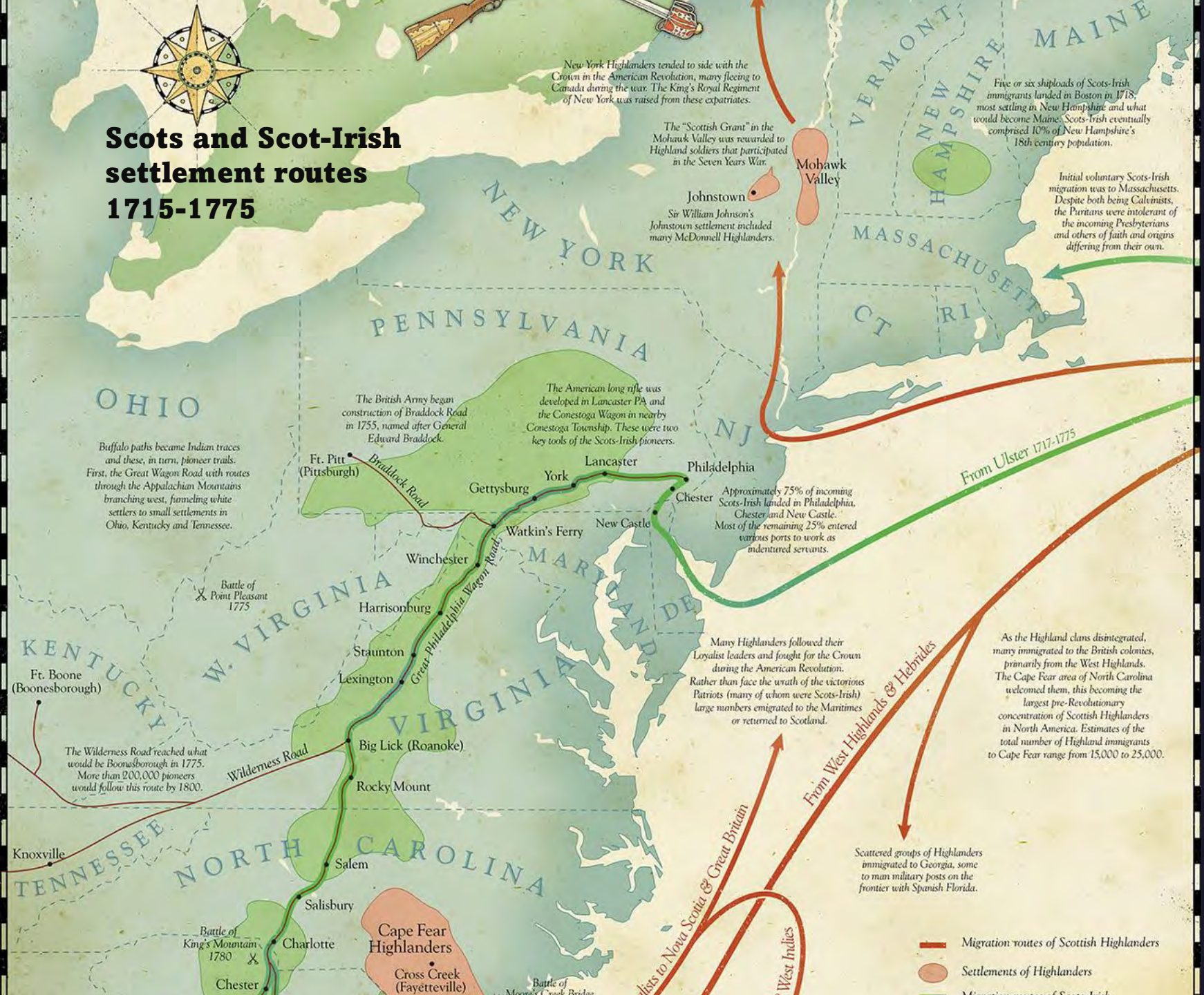
**European settlement
penetration to about 1700**



**20th century
English cigarette package**



Scots and Scot-Irish settlement routes 1715-1775



New York Highlanders tended to side with the Crown in the American Revolution, many fleeing to Canada during the war. The King's Royal Regiment of New York was raised from these expatriates.

The "Scottish Grant" in the Mohawk Valley was rewarded to Highland soldiers that participated in the Seven Years War.

Johnstown
Sir William Johnson's Johnstown settlement included many McDonnell Highlanders.

Five or six shiploads of Scots-Irish immigrants landed in Boston in 1718, most settling in New Hampshire and what would become Maine. Scots-Irish eventually comprised 10% of New Hampshire's 18th century population.

Initial voluntary Scots-Irish migration was to Massachusetts. Despite both being Calvinists, the Puritans were intolerant of the incoming Presbyterians and others of faith and origins differing from their own.

Buffalo paths became Indian traces and these, in turn, pioneer trails. First, the Great Wagon Road with routes through the Appalachian Mountains branching west, funneling white settlers to small settlements in Ohio, Kentucky and Tennessee.

The British Army began construction of Braddock Road in 1755, named after General Edward Braddock.

The American long rifle was developed in Lancaster PA and the Conestoga Wagon in nearby Conestoga Township. These were two key tools of the Scots-Irish pioneers.

Approximately 75% of incoming Scots-Irish landed in Philadelphia, Chester and New Castle. Most of the remaining 25% entered various ports to work as indentured servants.

Battle of Point Pleasant 1775

Many Highlanders followed their Loyalist leaders and fought for the Crown during the American Revolution. Rather than face the wrath of the victorious Patriots (many of whom were Scots-Irish) large numbers emigrated to the Maritimes or returned to Scotland.

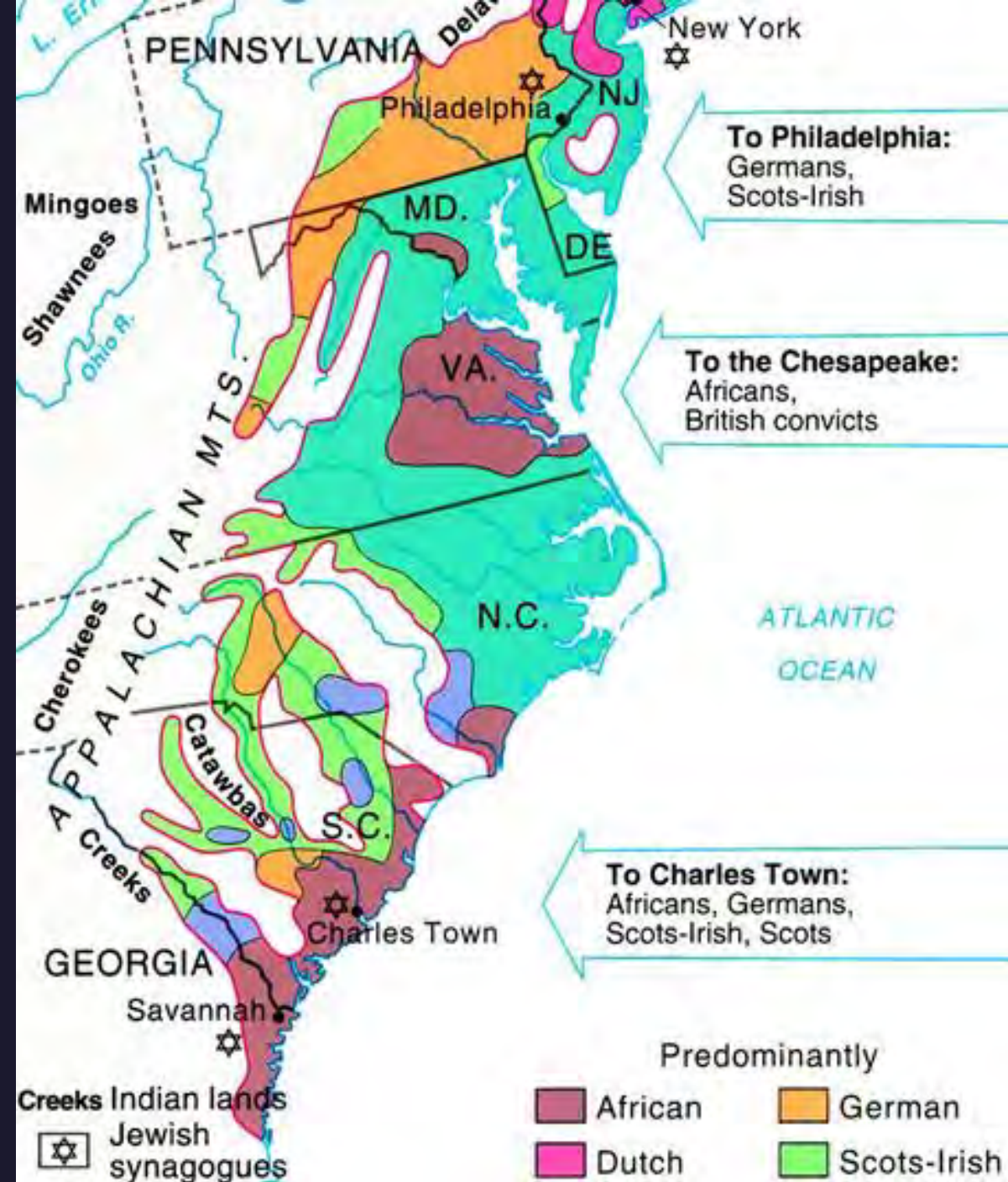
As the Highland clans disintegrated, many immigrated to the British colonies, primarily from the West Highlands. The Cape Fear area of North Carolina welcomed them, this becoming the largest pre-Revolutionary concentration of Scottish Highlanders in North America. Estimates of the total number of Highland immigrants to Cape Fear range from 15,000 to 25,000.

The Wilderness Road reached what would be Boonesborough in 1775. More than 200,000 pioneers would follow this route by 1800.

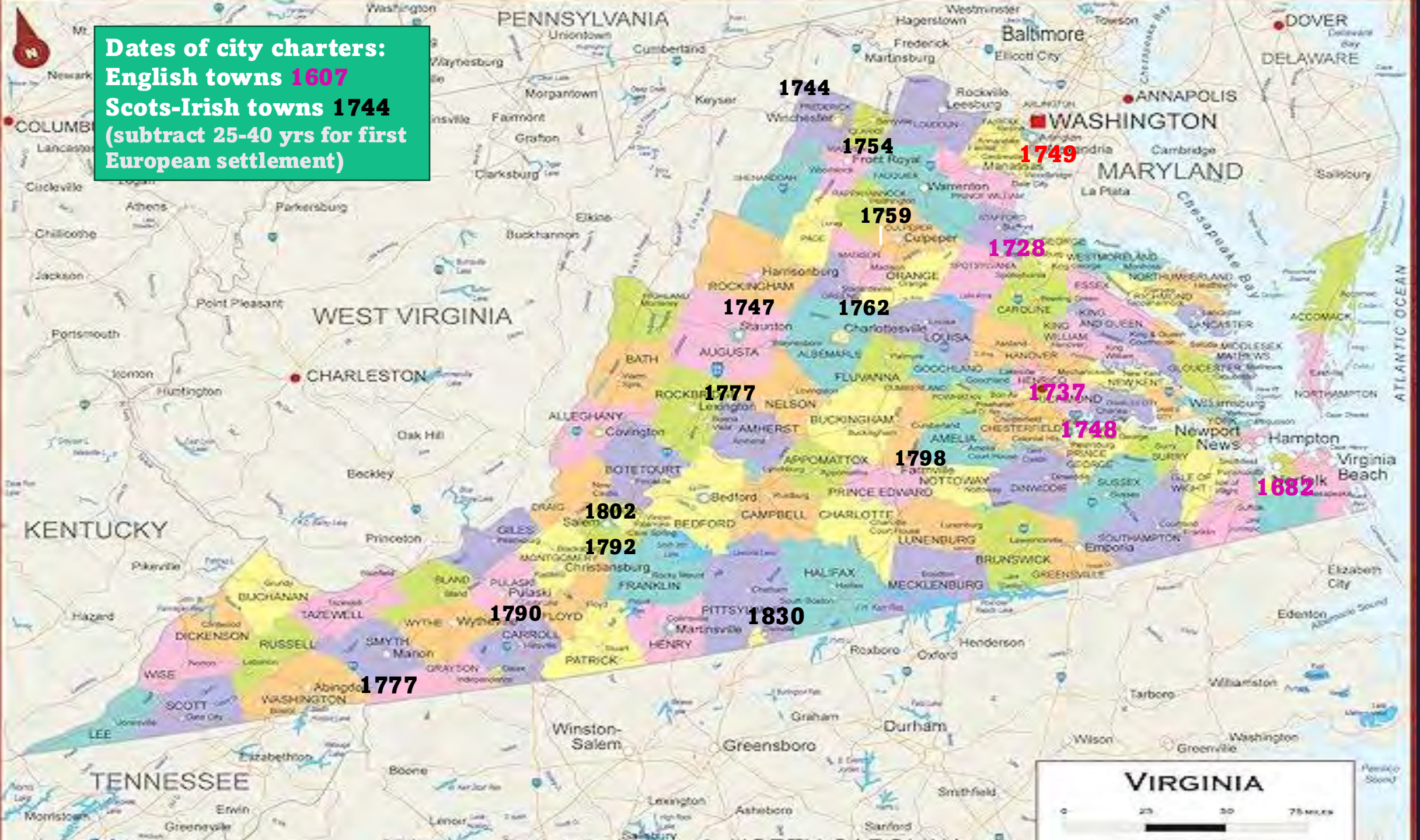
Scattered groups of Highlanders immigrated to Georgia, some to man military posts on the frontier with Spanish Florida.

- Migration routes of Scottish Highlanders
- Settlements of Highlanders
- Migration routes of Scots-Irish

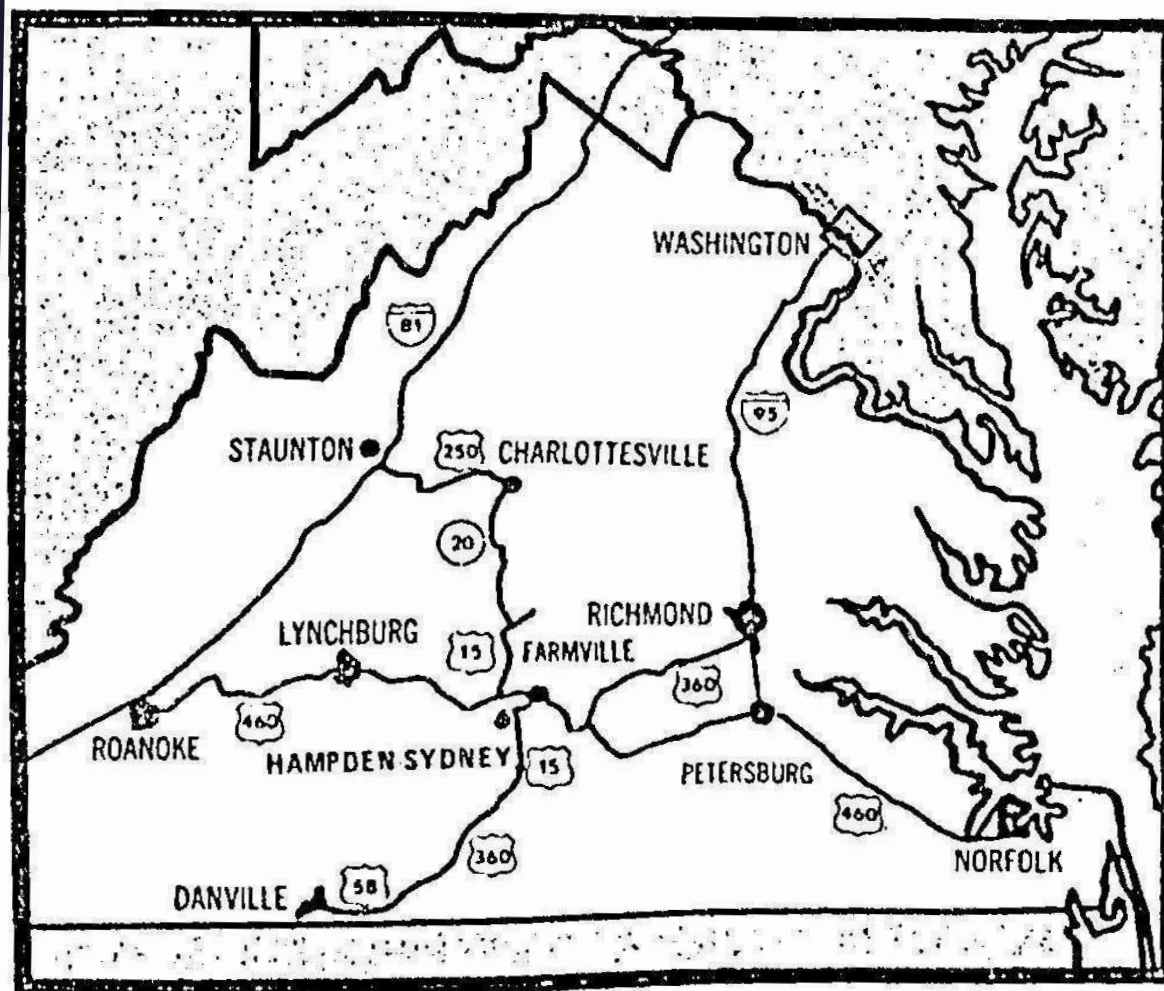
**Ethnic immigration
about 1775**



Dates of city charters:
English towns 1607
Scots-Irish towns 1744
(subtract 25-40 yrs for first European settlement)



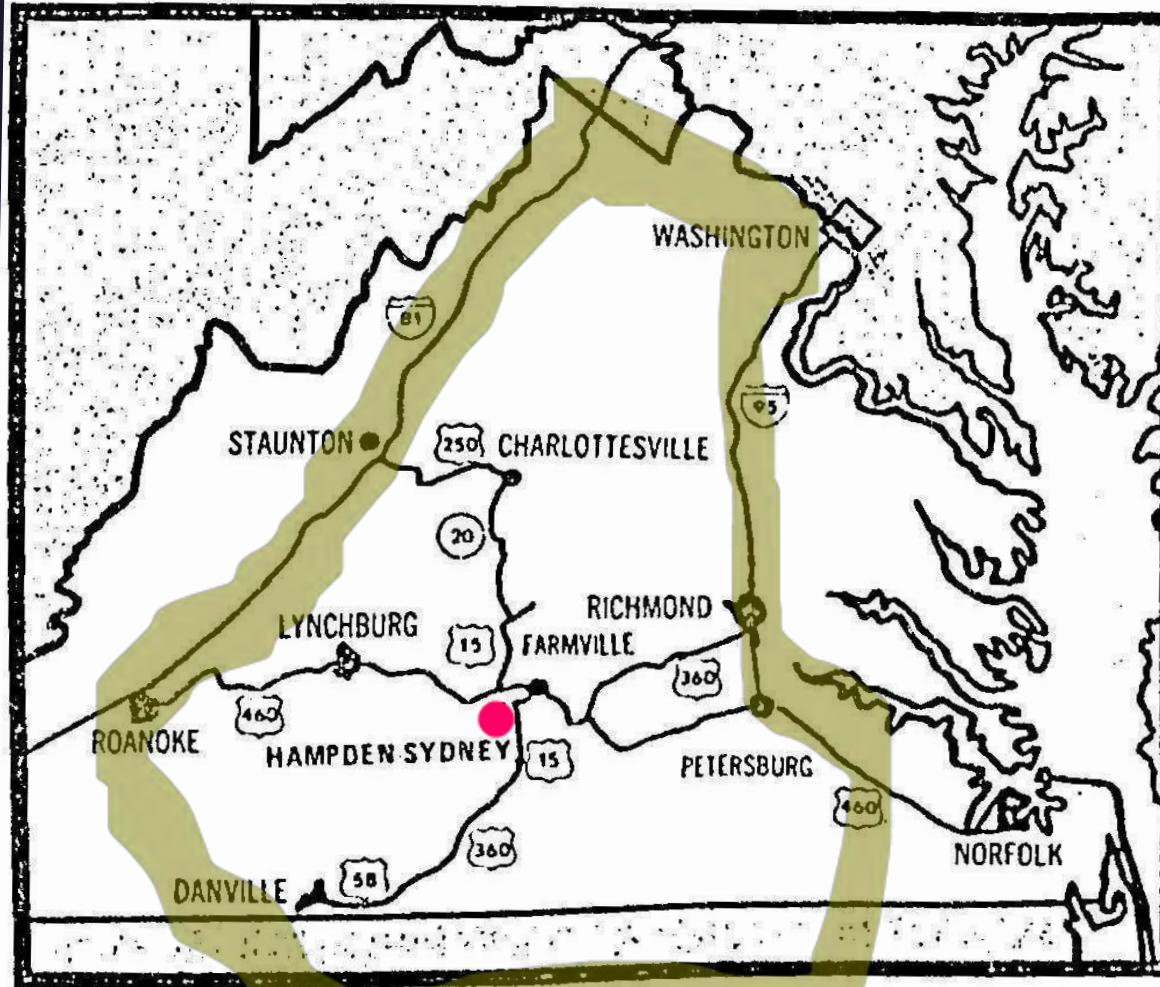
**Hampden-Sydney
catalog map**



Washington	182 miles	Lynchburg.....	55 miles
Norfolk	150 miles	Charlottesville ..	69 miles
Roanoke	108 miles	Staunton	101 miles
Danville	90 miles	Richmond	70 miles

Yellow border roughly corresponds to Scots penetration by ~ 1775; to east is solidly English and Anglican

Note central location of Hampden-Sydney !

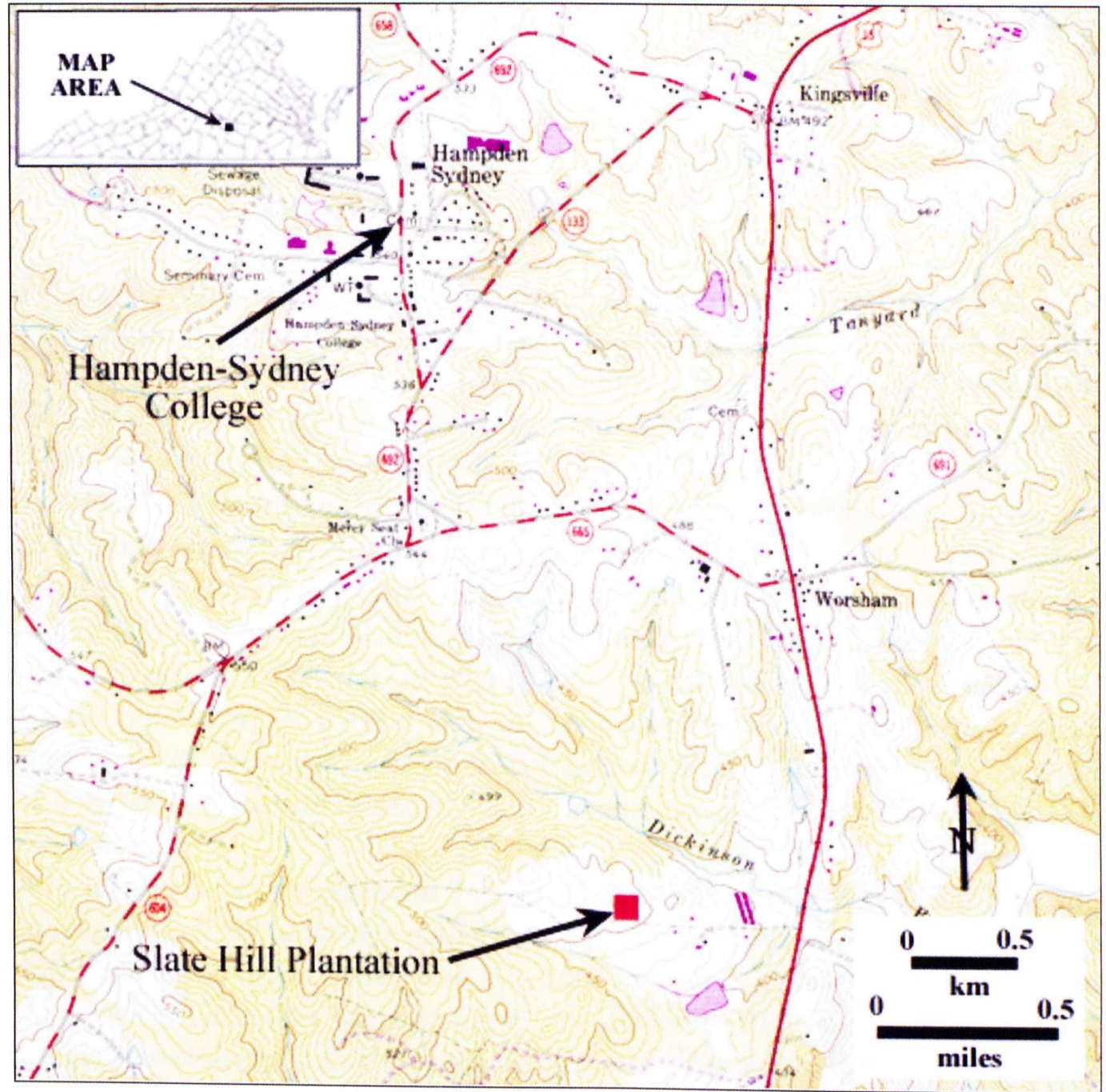


Washington182 miles	Lynchburg 55 miles
Norfolk150 miles	Charlottesville	.. 69 miles
Roanoke108 miles	Staunton101 miles
Danville 90 miles	Richmond 70 miles

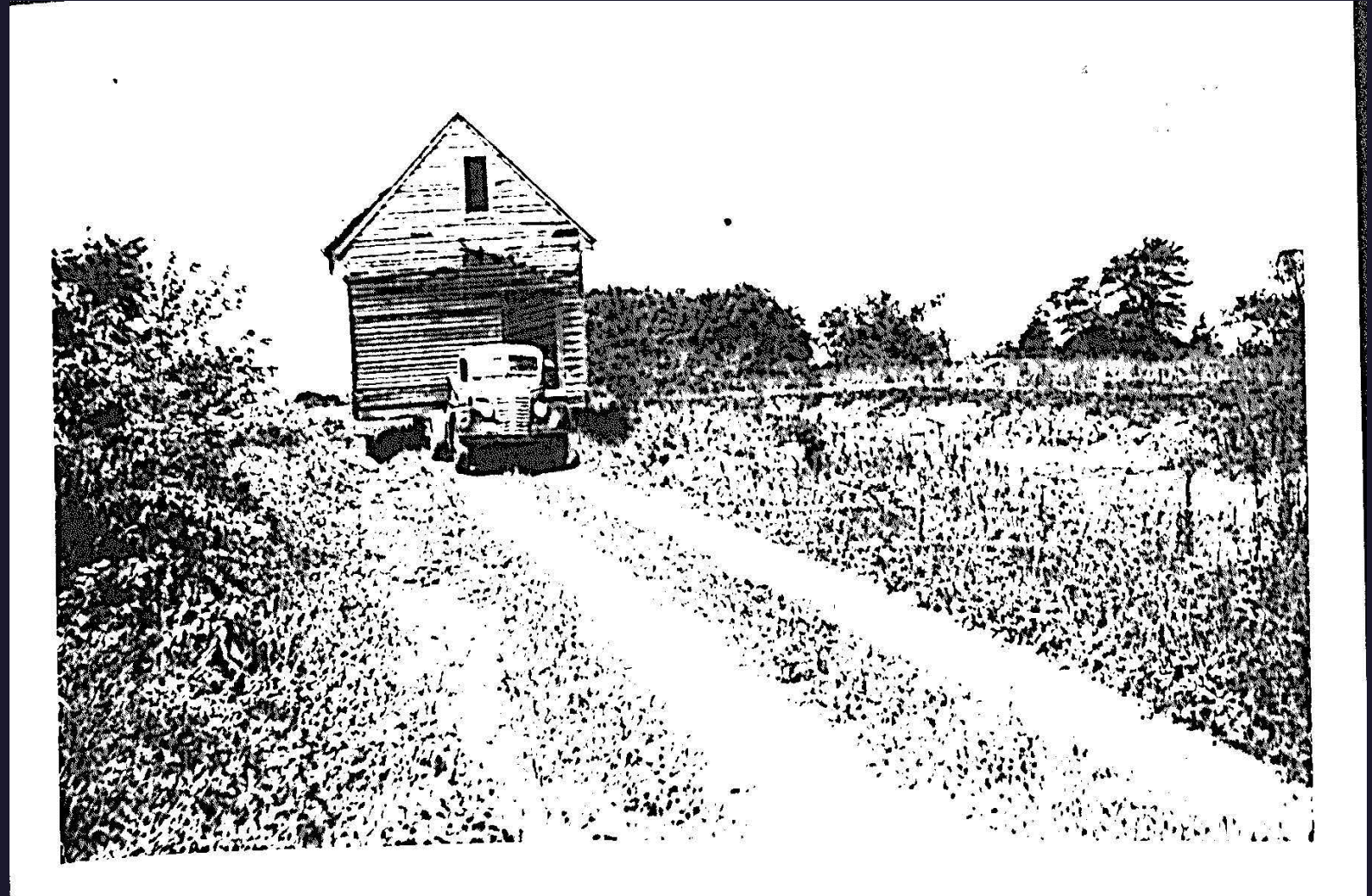
1 Presbyterian x ~10 = 1 Church ~1620 (first year in North America)
x ~10 = 1 Presbytery 1706
x ~10 = 1 Synod (US state) 1786
x ~10 = 1 General Assembly (USA) 1789

In 1774, two presbyteries existed in Virginia: Hanover and Lexington, divided at the Blue Ridge, so all the decisions about starting a college were made by Hanover Presbytery. That name was applied because the only 3 Presbyterian church buildings in Virginia were in Hanover County, built as a result of a lawsuit the Hanover Presbyterians had taken all the way to the king in 1748.

Location of initial meeting of Hanover Presbytery to establish a college east of Blue Ridge



**By the time we trucked the
birthplace from Slate Hill
to Hampden-Sydney it
wasn't in very good shape**



Samuel Stanhope Smith 1774-1778



Original 100-acre land gift is blue border



Foundation excavated in 1981



Hampden House



540 foot contour



slope

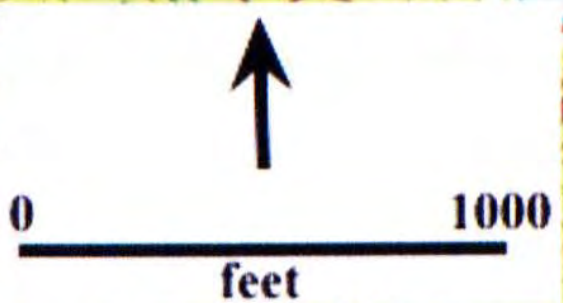


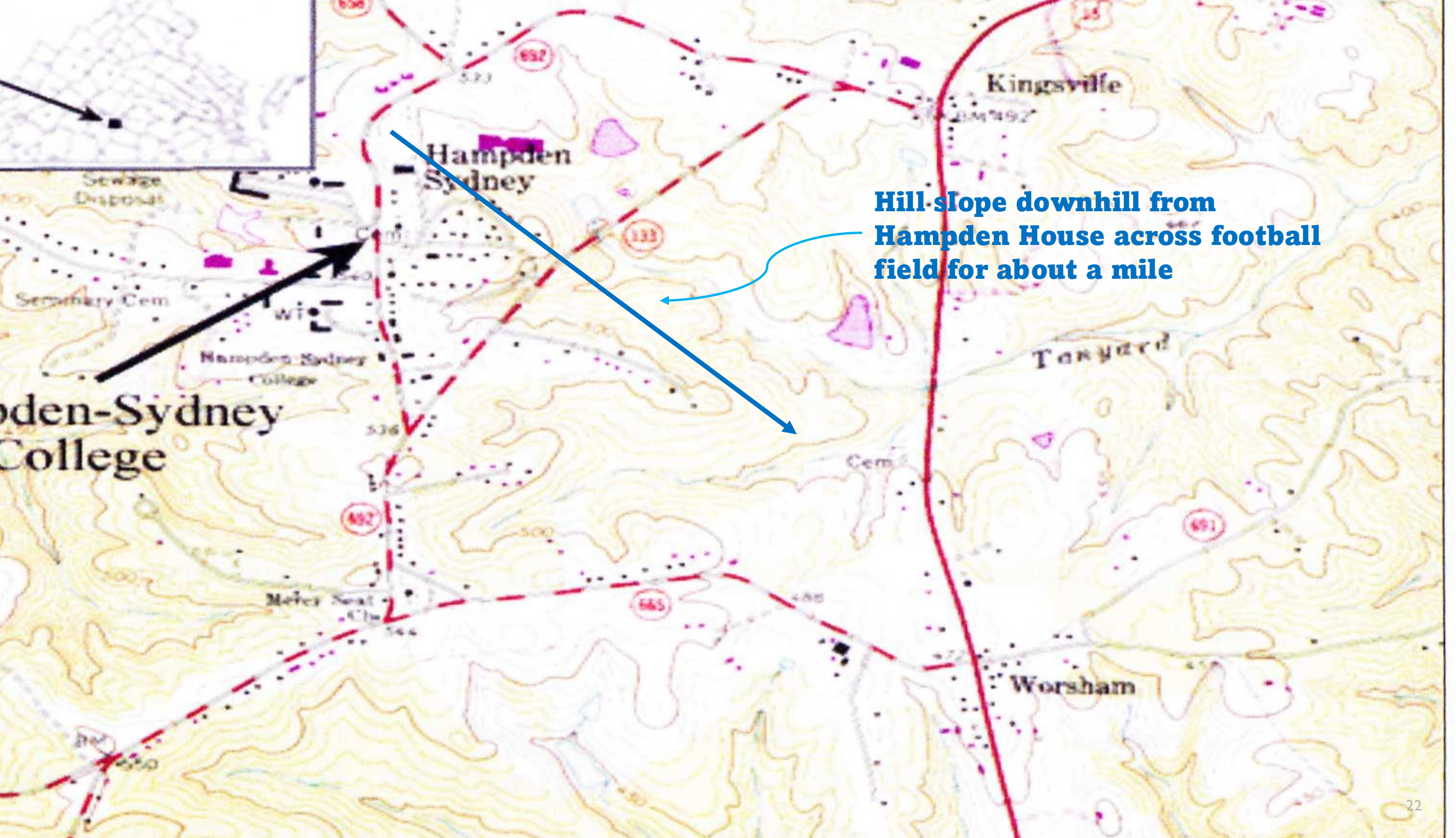
Hampden Sydney

Sewage Disposal

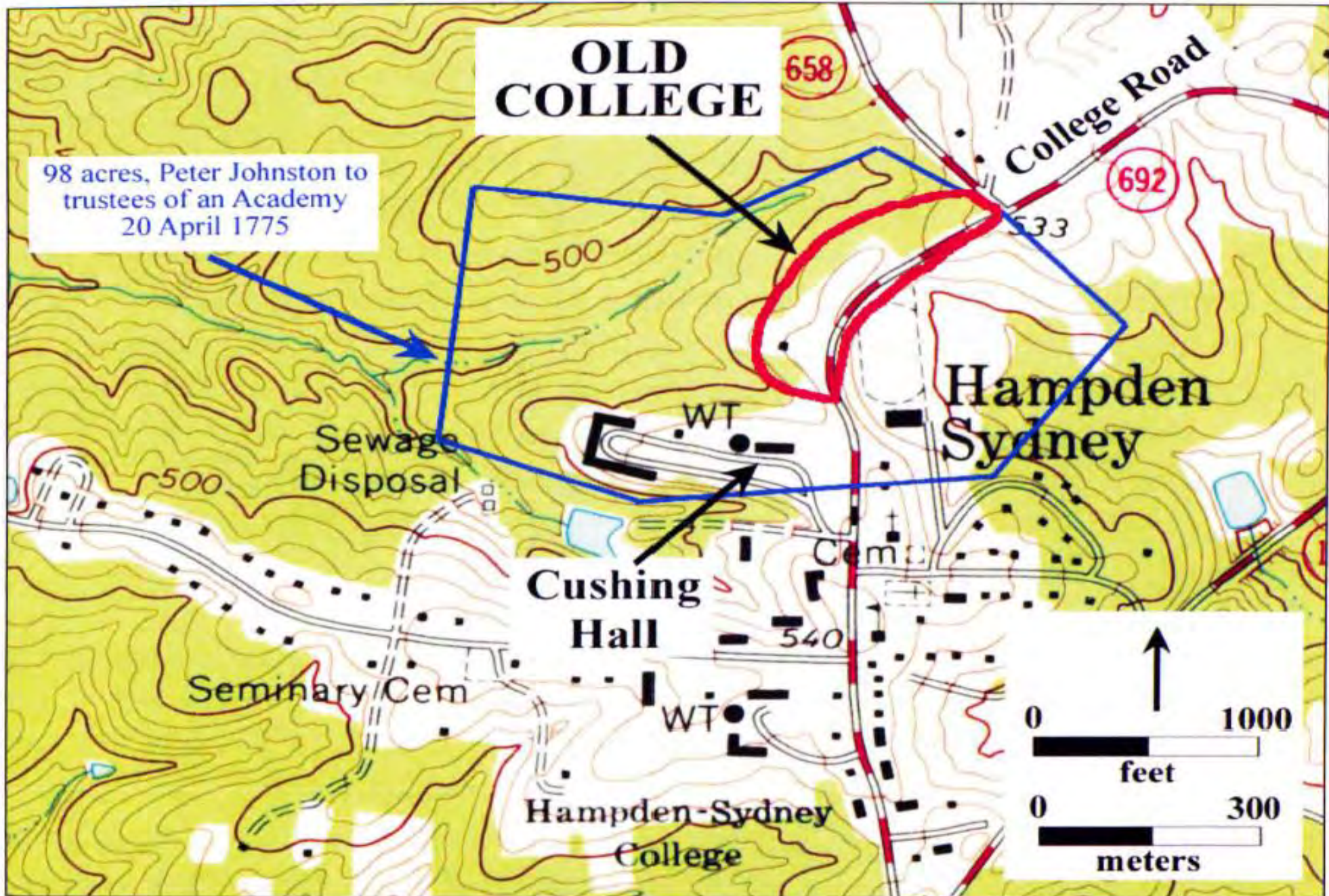
WT

Cem





Hill slope downhill from Hampden House across football field for about a mile



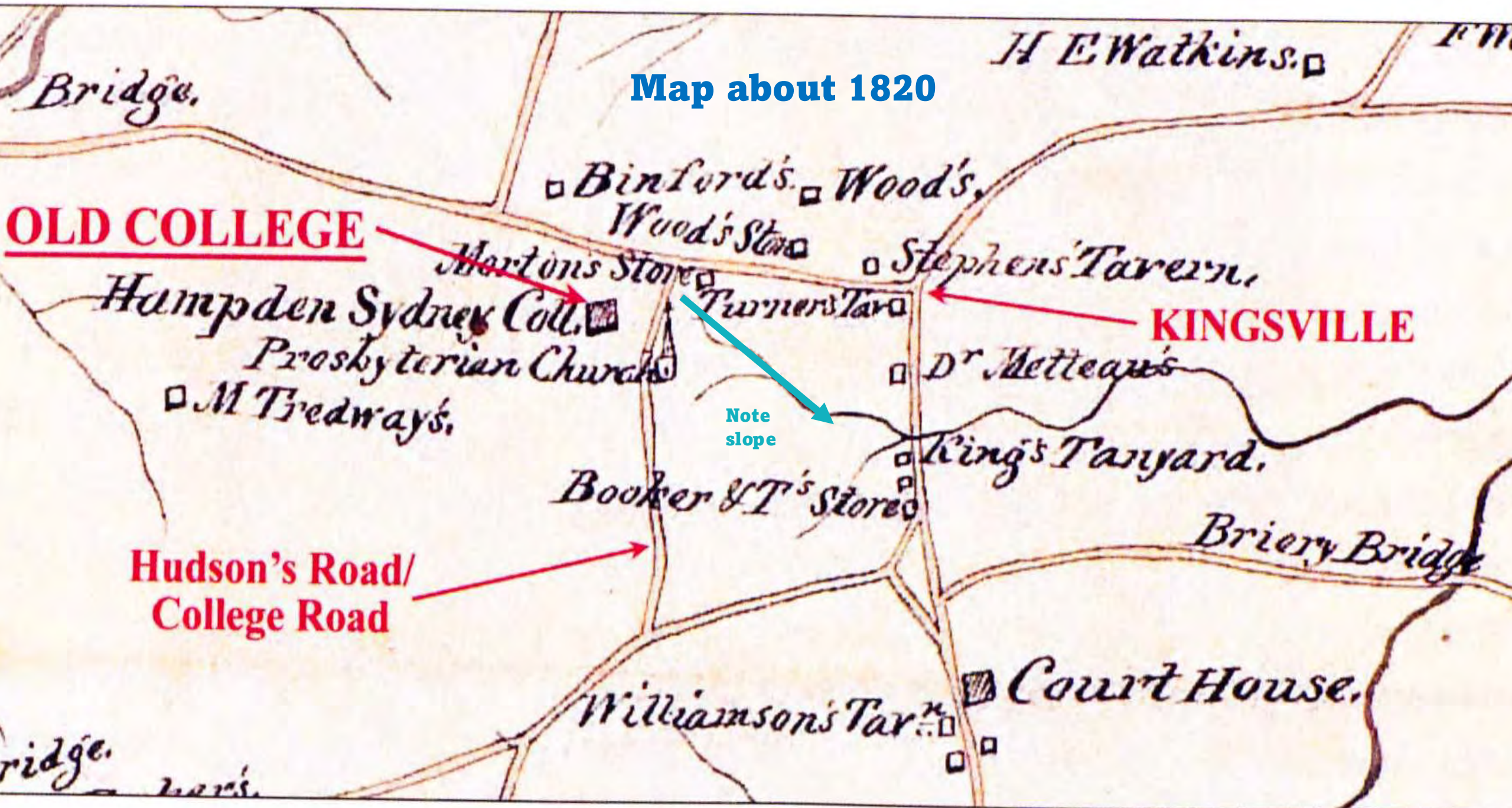
Map about 1820

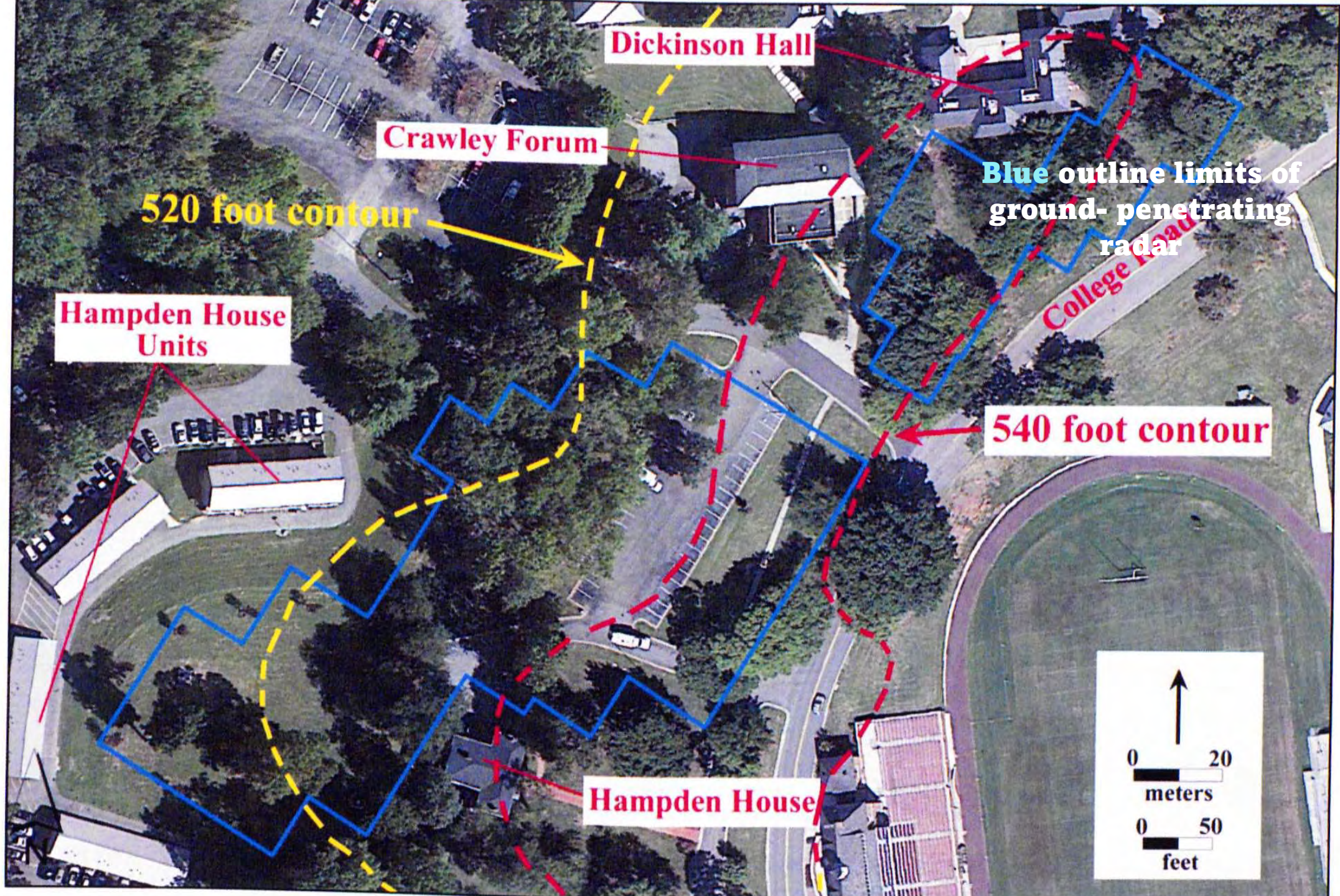
OLD COLLEGE

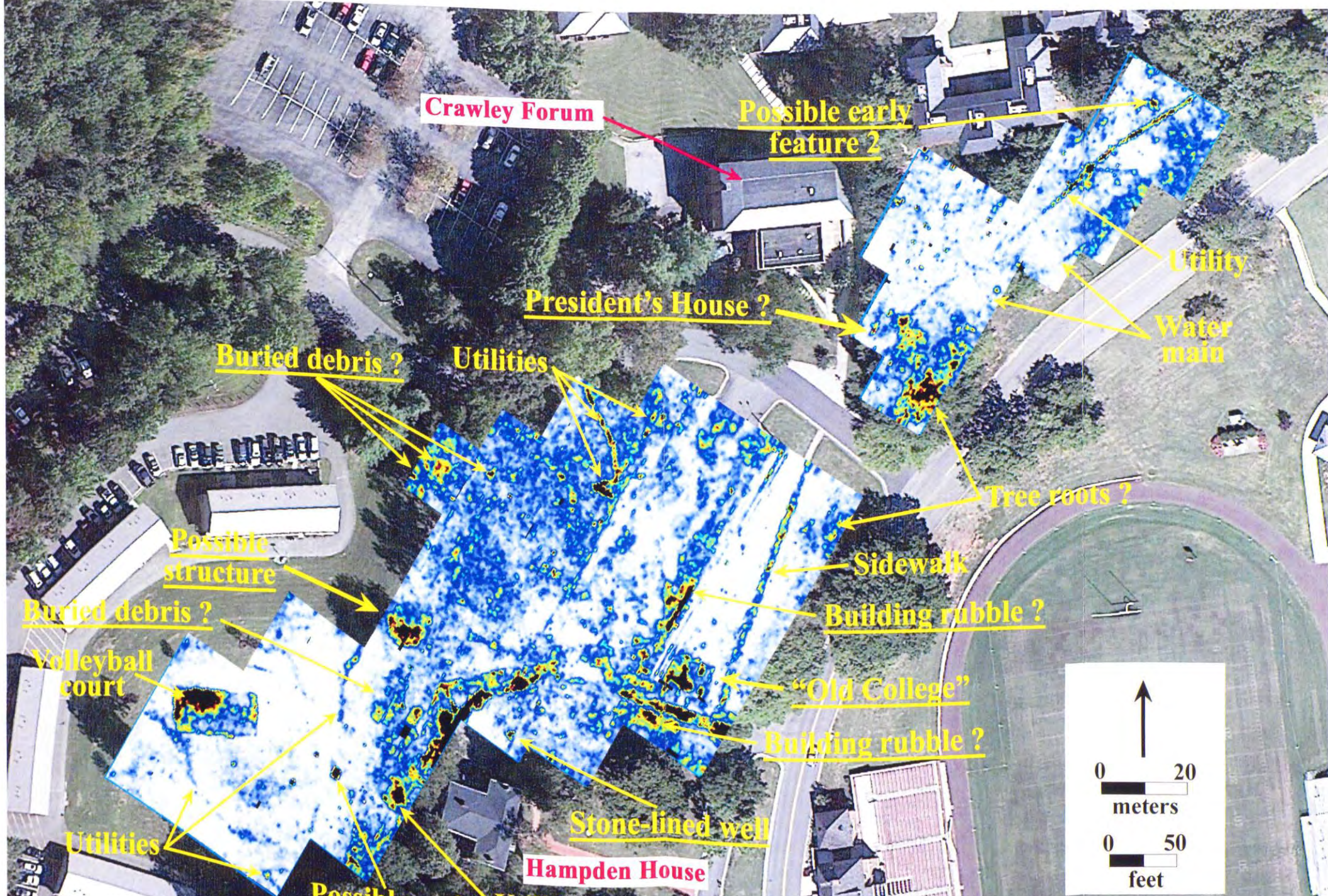
KINGSVILLE

**Hudson's Road/
College Road**

Note
slope







Crawley Forum

Possible early feature 2

Utility

Water main

President's House?

Buried debris?

Utilities

Tree roots?

Possible structure

Sidewalk

Building rubble?

Buried debris?

Volleyball court

"Old College"

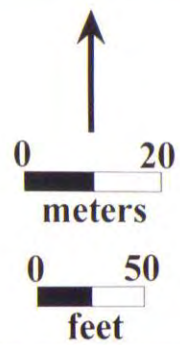
Building rubble?

Stone-lined well

Hampden House

Utilities

Possible



Approximate location of Hampden House

Approximate location of foundation excavated in 1981



Common Hall

Steward's Hall

Student Houses

The College

Library House

The President's House

Recent (1995) sketch imagined from radar results

The Old College 1775 (replica ~1835)



**One-story
Office
added in
1950**

1776 petition of Dissenters to Virginia House of Delegates

A petition of sundry inhabitants of the county of Prince Edward, whose names are thereunto subscribed was presented to the House and read, setting forth, that they heartily approve and cheerfully submit themselves to the form of government adopted for this State, and hope **that the United American States will long continue free and independent**; * * * that justice to themselves and posterity makes it their indispensable duty in particular to entreat, **that, without delay, all church establishments might be pulled down**, and every tax upon conscience and private judgment abolished, and each individual left to rise or sink by his own merit, and the general laws of the land.

Journal of the House of Delegates of Virginia, October 11, 1776

The Presbyterian Church in the United States has a nationwide annual meeting called a General Assembly, at which it elects a single presiding officer for the coming year, called a Moderator.

For the 31 years between 1798 (when the General Assembly was first set up) and 1829, this national position in the Presbyterian Church was held by a man with Hampden-Sydney connections no fewer than eight times:

1798	John Blair Smith	President
1799	Samuel Stanhope Smith	Founding President
1807	Archibald Alexander	President
1809	Drury Lacy	President
1816	James Blythe	class of 1788
1819	John Holt Rice	faculty, seminary president
1821	William Hill	class of 1789
1829	Benjamin Holt Rice	class of 1803

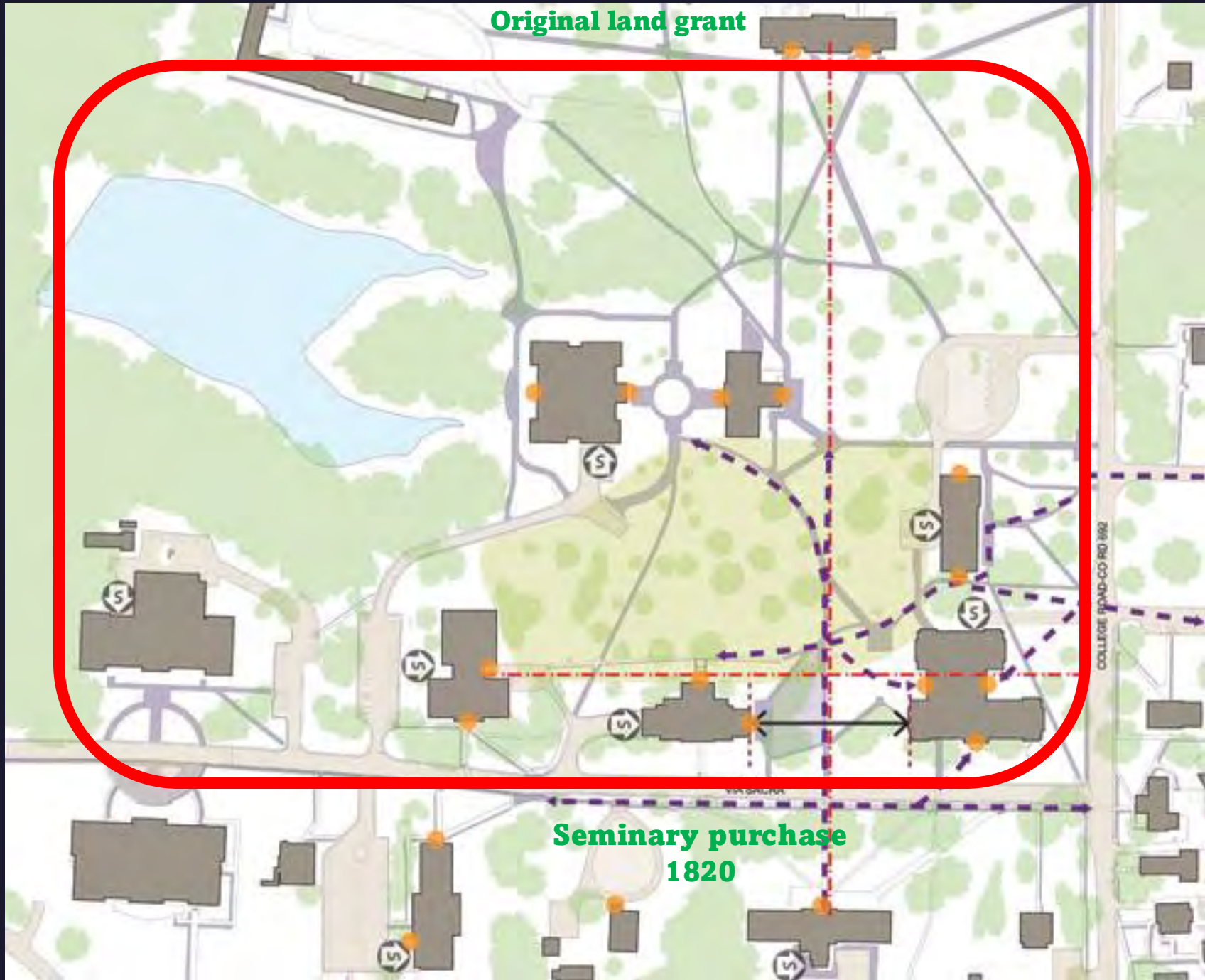
Trustee 1775-1820 (and US President) James Madison, who left the White House on March 4, 1817 and moved back to his home in Orange County, Virginia about 3 months before Cushing was hired by the College



Jonathan P. Cushing 1817-1835
First faculty member appointed as
Professor of Chemistry
President 1821-1835



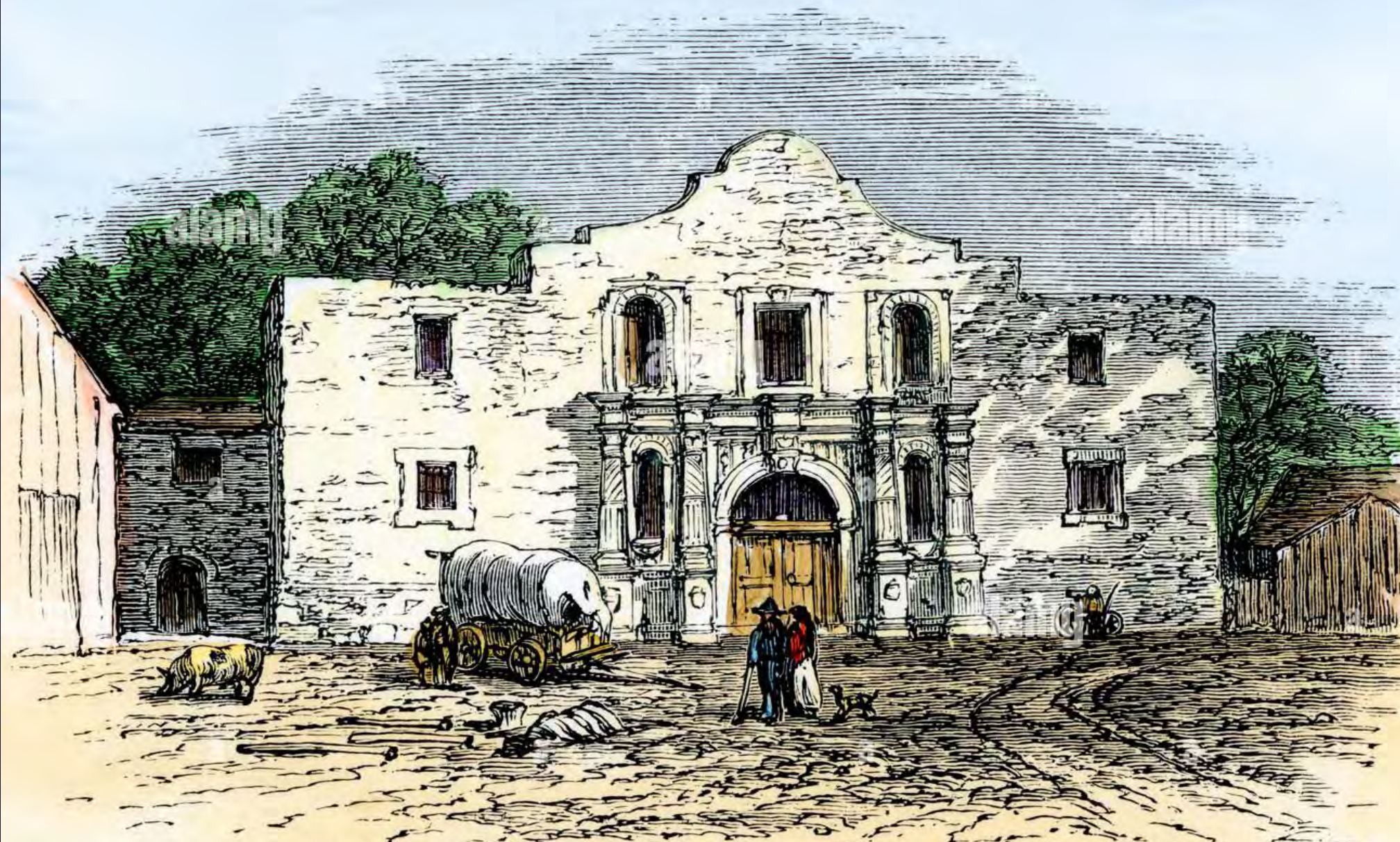
1815 land purchase by HSC trustees for future construction



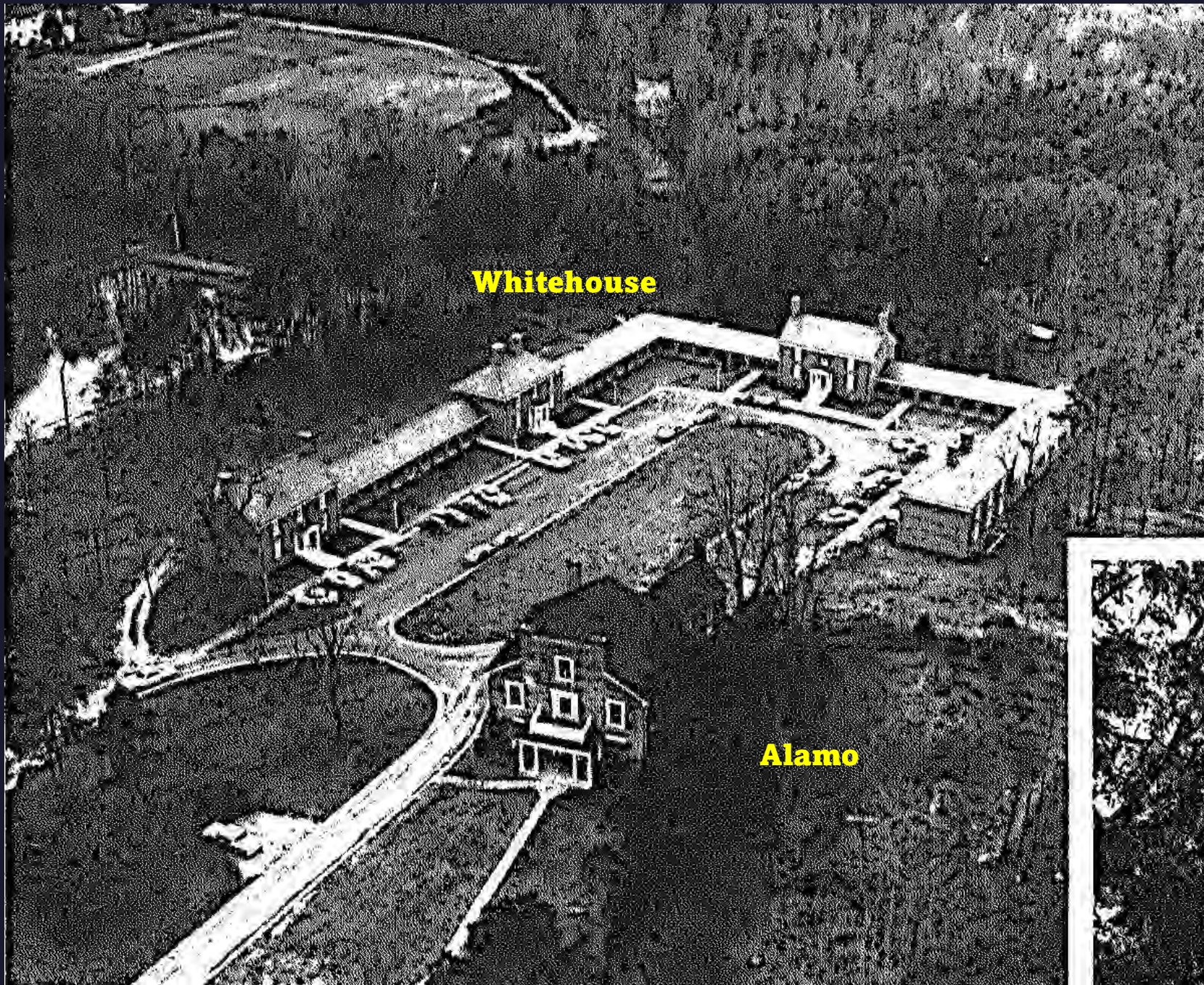
Steward's Hall 1821
"The Alamo"



The real Alamo, as it appeared in newspaper woodcuts in 1837







Whitehouse

Alamo



Old Nassau Hall, Princeton

The “New College” 1823-1831



The College, 1890
Ends = dormitory (76 beds)
Center = classrooms, lab,
libraries



Chemistry lab

Cushing ~1975
with water tower



**The President's House 1834
now Graham Hall**



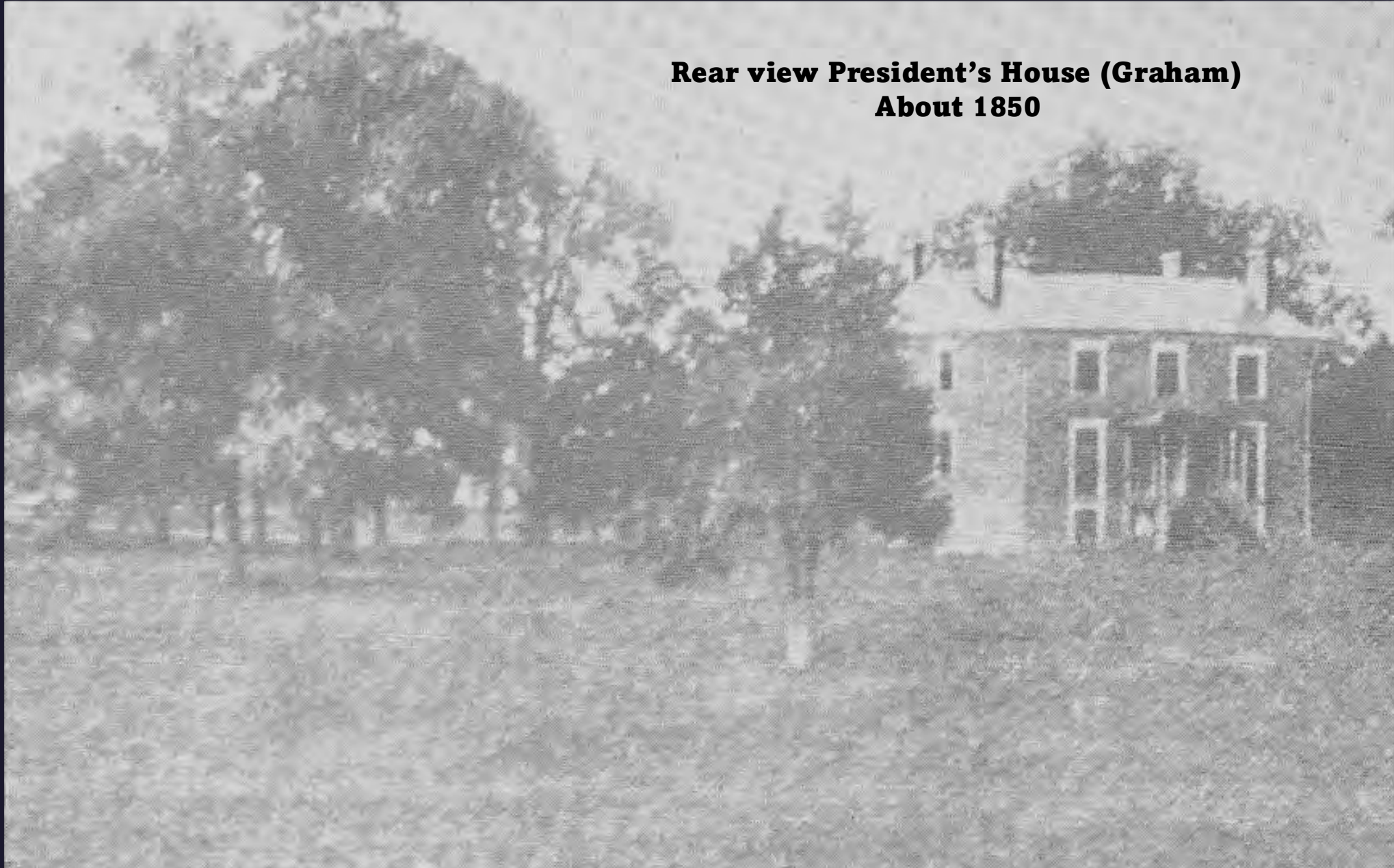
Looking from in front of Cushing towards Venable about 1850



**President's House
(Graham)**

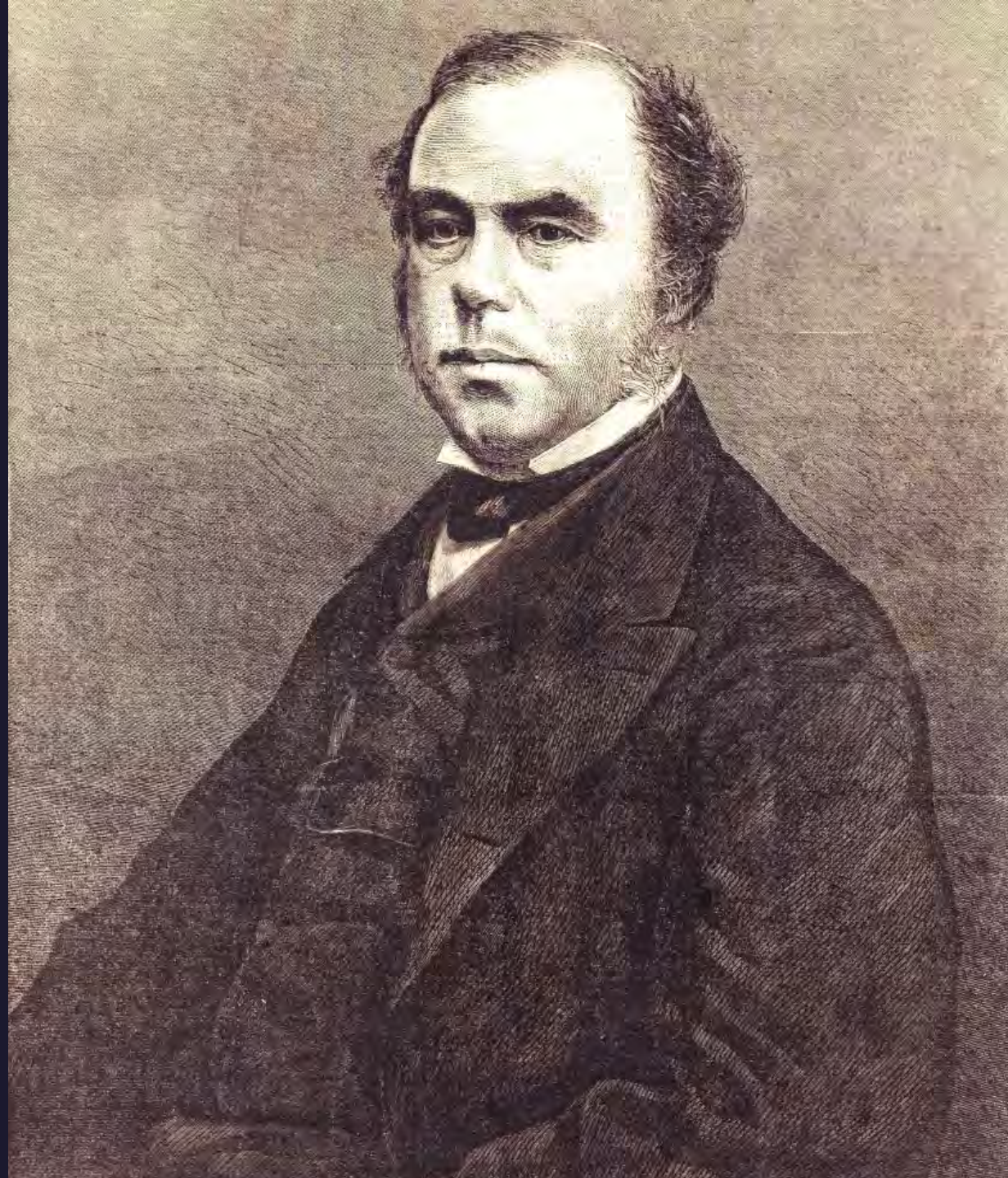
Venable

**Rear view President's House (Graham)
About 1850**



John W. Draper
1835-1839

**Replaced Cushing as
Professor of Chemistry**



**First faculty
member to be
photographed –
Draper at NYU 1839**



**Union Hotel
Richmond**

**HSC Department of Medicine
1837-1853**



MCV Egyptian Hall, Broad St Richmond (1845)
photo ~1890



**Egyptian Building
built 1845**



**Dorothy Catherine (?)
Draper 1839**



Photographic copy of the first
Daguerrestype of the human face
in existence taken by Mr. John W. Draper
on the roof of the New York University
in 1839.

The main plaque has 88 names, the supplemental plaque 14, for a total of 102

Going into the war, there were about 400 living alumni

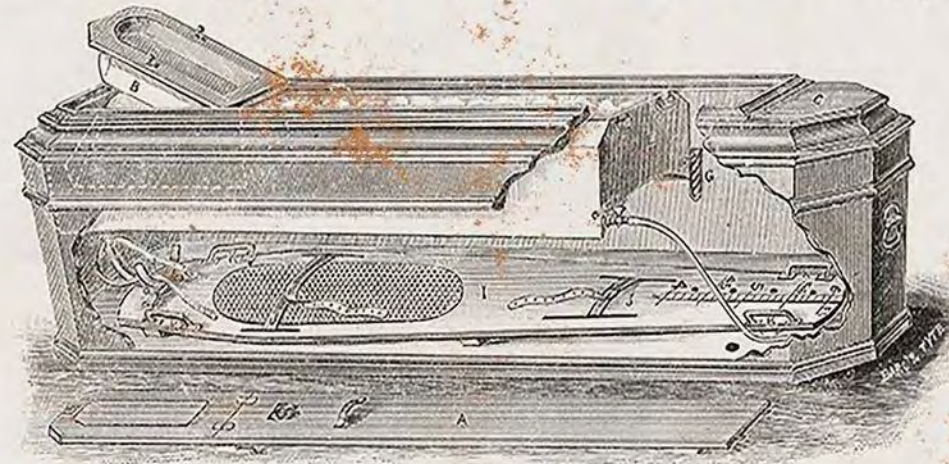


Miss Bessie's Funeral Day

J. C. TAYLOR & SON'S
PATENT IMPROVED ICE CASKETS,

FOR PRESERVING THE DEAD BY COLD AIR.

The Pioneer Corpse Preserver, Over 3,500 in Use.



PRICES AND SIZES:

6 Feet 4 Inches Long,	20 Inches Wide,	\$60 00.	4 Feet 10 Inches Long,	17 Inches Wide,	\$48 00.
5 " 10 " " "	20 " " "	38 00.	3 " 10 " " "	15 " " "	42 00.

Send for Illustrated and Descriptive Price-List, Containing full Particulars.

FOR SALE AT MANUFACTURERS' PRICES, BY

Paxson, Comfort & Co., 523 Market St., Philadelphia.



BETTY G. DICKINSON

JUNE 22, 1852

JAN. 2, 1948

Dr. Richard McIlwaine
President 1883-1904
Fundraiser for Memorial Hall



**Memorial Hall 1889-1891 (later McIlwaine)
Used for classes till 1935,
Chapel till 1950**





**The College
(Cushing)**

Memorial Hall

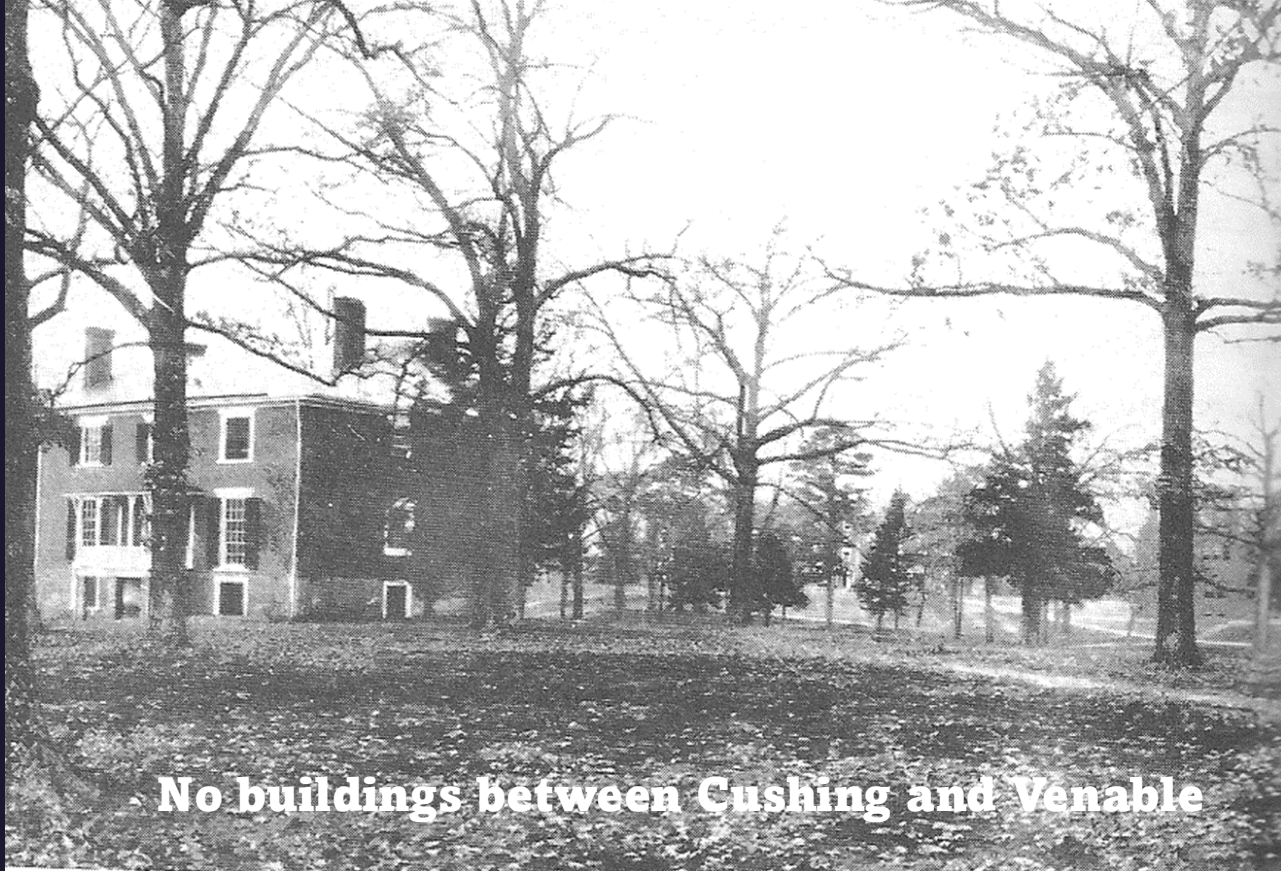
The Cry of the Wild Goose



B. S. Oliver



Tom Gilmer



Cushing



Venable



No buildings between Cushing and Venable

45 windows



Stagger Inn



**Confederate Major
Richard Morton Venable ('57)
in uniform at about 25**

**When the Seminary left
in 1897, he bought their
campus and donated
most of it to the College**



Penshurst
~1825



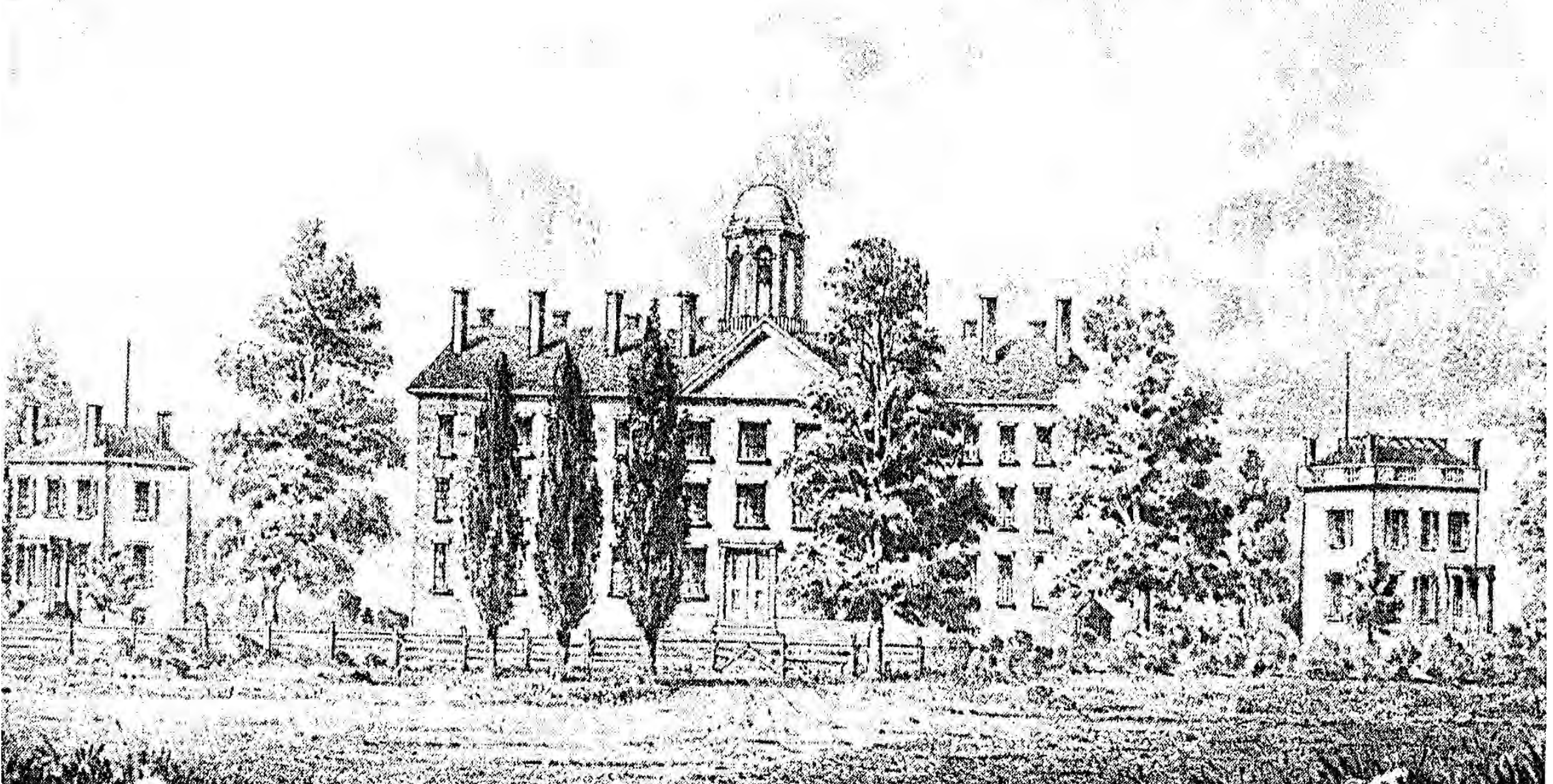
**Late Victorian
wide porch**





**Union Theological
Seminary 1824-1897**

Penshurst, the Seminary, and Middlecourt about 1840





Stagger Inn

The seminary student body about 1890

Middlecourt 1825



**Seminary's Brown Library
about 1850**



Brown Library
interior 1895 --
before electric
lights



skylights

Library fire 1941



**The Maples --
Seminary
residence
~1894**



**Westmerton (~1850)
was a faculty
residence and was
part of the Venable
purchase that he did
not give the College**



Seminary's Geneva House dorm ~1890





**Seminary's Edinboro House dorm
remodeled as Comity Club ~1904-1940**

Dance hall

A dance in the Comity Club (note absence of flappers)



**Hampden-Sydney
post office 1940
(site of Comity Club)**

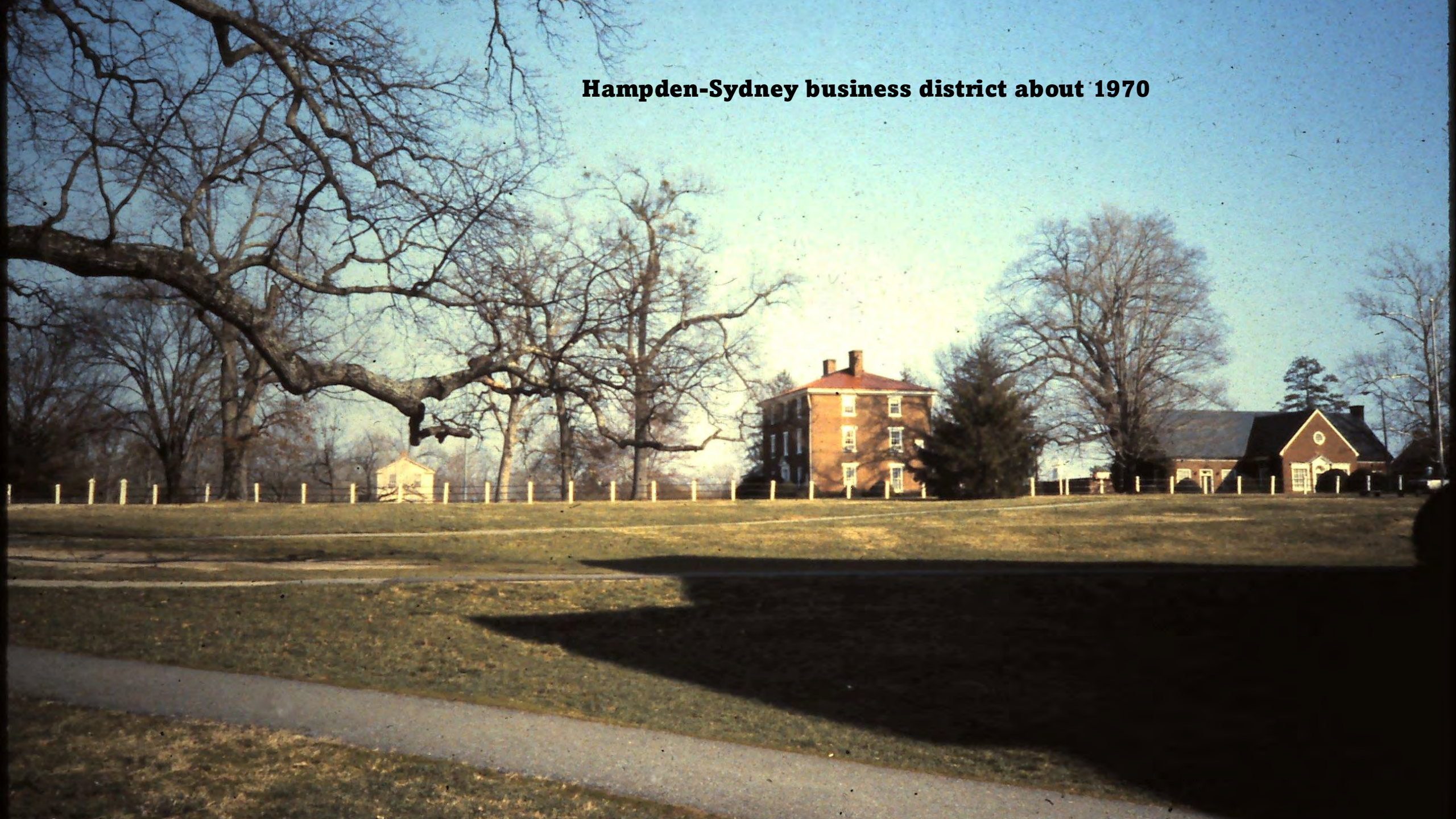


**Westminster Hall —
seminary dining hall
~ 1840
(now Atkinson)**





Hampden-Sydney business district about 1970



**Hampden-Sydney business district
about 1904 - 1912**



Hart's Store

Atkinson

Comity Club

Penshurst

Via Sacra -- dirt

cows



**College Shop 1930 (replaced Hart's Store)
Textbooks, groceries, and snack bar**

Eggleston's Store (right center) about 1918

New Graham gym

Eggleston's

Atkinson



Eggleston's Store ~ 1930 on College Road



**Restover residence 1966 –
back 50 yards, outside stair removed**



**Atkinson Hall from
Restover front yard**



Bagby Hall (science center 1921-1968)



**Back (north) side
of Bagby Hall**

**Windows in ovals
are faculty
offices, 1 per
floor**



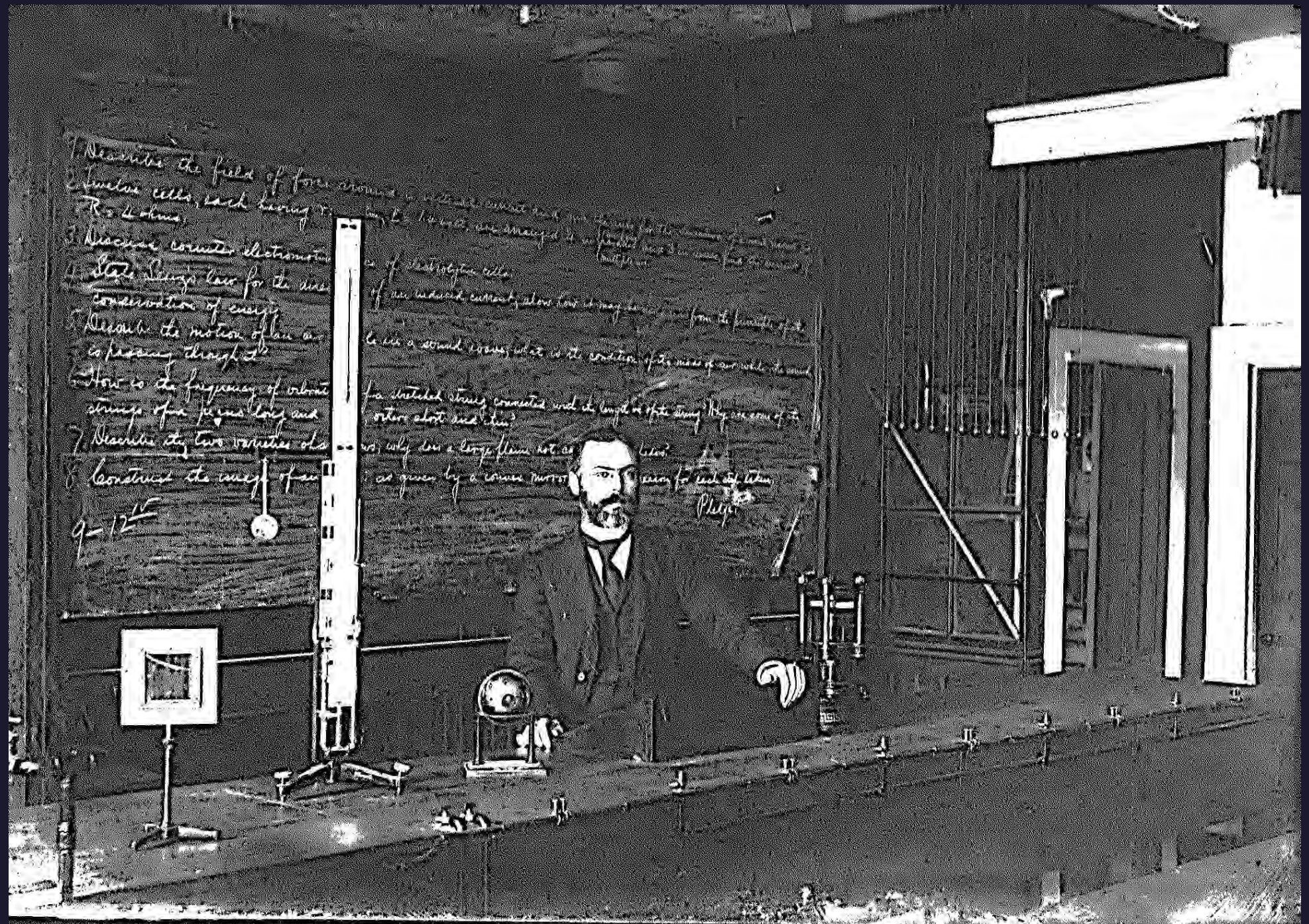
**Organic chemistry lab
with modern fume hoods
and inert-gas cylinders**

**Ceiling beam is a
wooden 12 x 12,
not a steel beam**



exhaust pipe

Dr. Bagby writes a physics exam on the board before photocopiers (or even mimeographs)







Used to be a **very** open campus

**1965 Commencement in Johns Auditorium
(June, no air conditioning)**

Bagby Hall



How Not to Be Valedictorian



Intercollegiate sports – first, basketball . . .



Basketball (invented 1891) is sort of played here in 1892



**Basketball
"space"**

**Graham with added gymnasium 1916
photo ~1970**



Four views (clockwise) of a game in Graham gym:

From top left, sideline photo (note viewers only one deep and kneepads);

top view from upper running deck;

top view showing support rods;

top view of a tipoff contest



Gammon Gym (basketball 1940-1977)



**A bigger crowd in
Gammon, but still
only 6 rows of seats**



**Still not a lot of room
beyond the end line**



Fleet Gymnasium in 1978



Gravel road

Now we come to football . . .



The football field (~1900-1964)

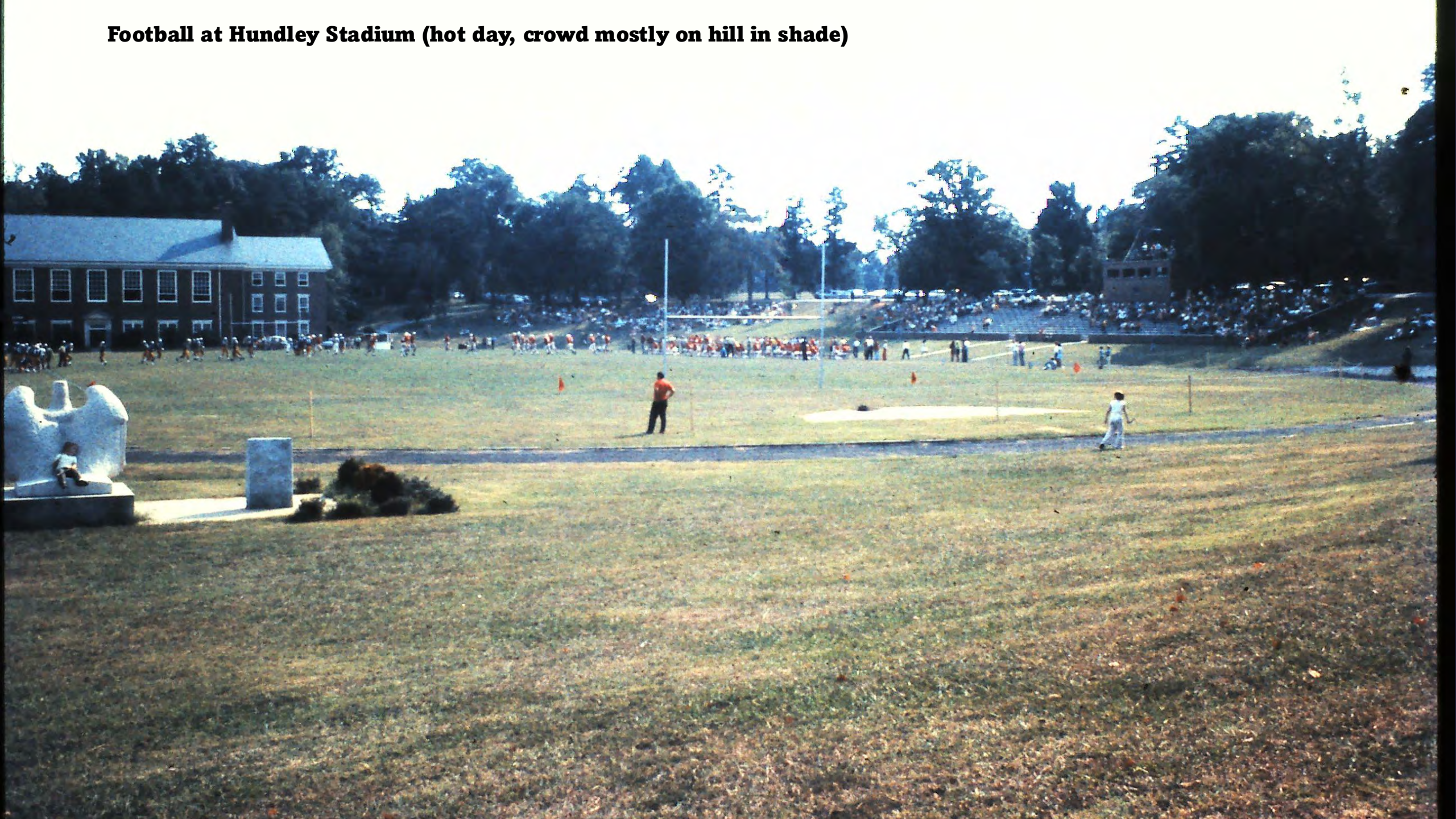
Bleachers inside track



Hundley Stadium (football 1965 - 2000)



Football at Hundley Stadium (hot day, crowd mostly on hill in shade)



The Hundley scoreboard



**Seats weren't always filled –
kiddie game in front distracted**



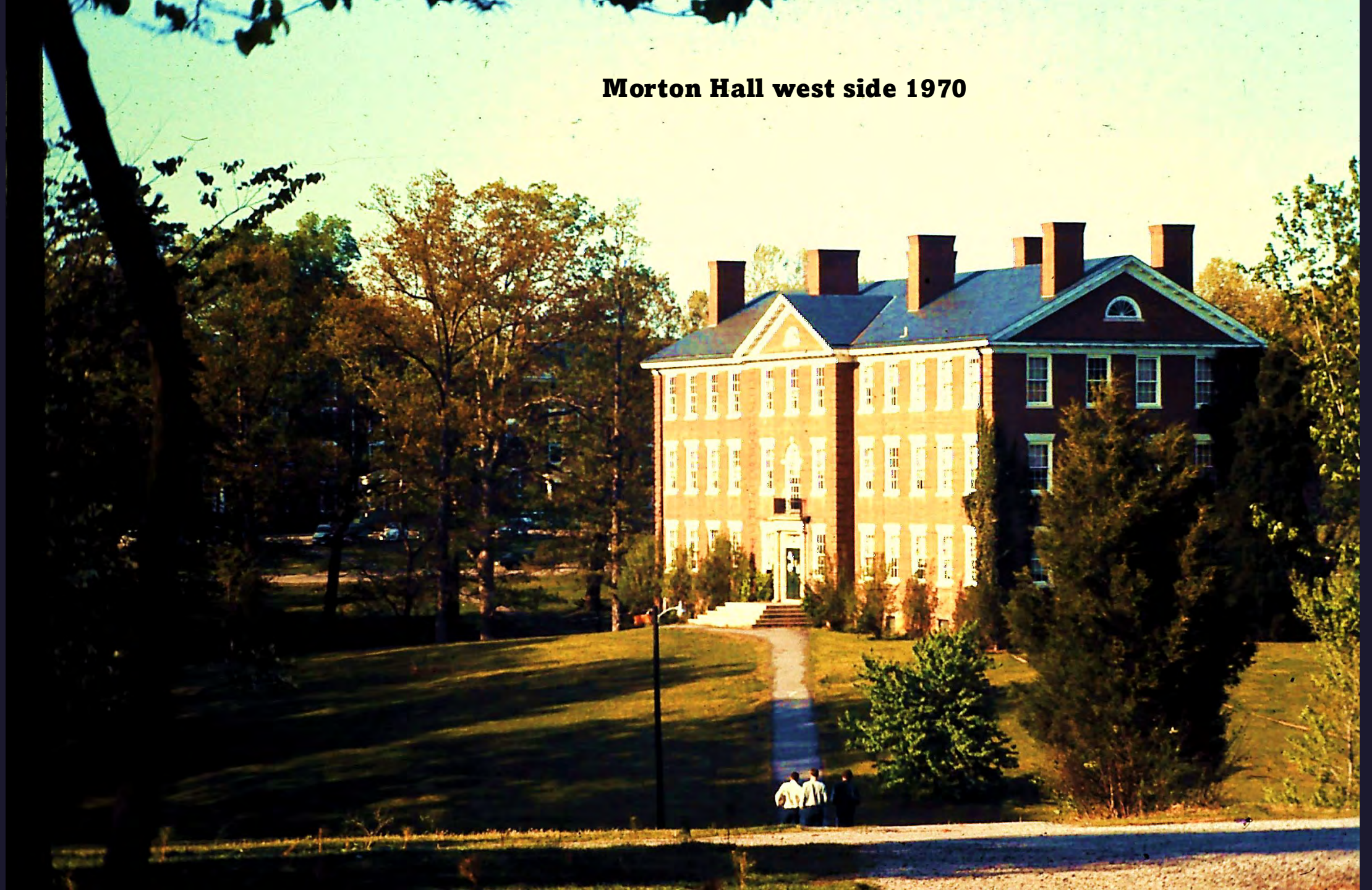
Everett Stadium



**Morton Hall 1935
east side 1970**



Morton Hall west side 1970



**Johns Auditorium 1950
Eggleston Library 1960**

Eggleston

Johns

The Decline and Fall of Memorial Hall

Memorial Hall (McIlwaine) fire 1956



Water tower for fire-fighting



Hose cart **not** putting water on McIlwaine fire



**Having Fun
Before Becoming
a Stuffy Professor**



Gilmer Hall 1968





